

Write your name here

Surname

Other names

**Pearson**  
**Edexcel GCSE**

Centre Number

--	--	--	--	--	--

Candidate Number

--	--	--	--	--	--

# Geography B

## Unit 2: People and the Planet

**Higher Tier**

Thursday 22 May 2014 – Morning  
**Time: 1 hour 15 minutes**

Paper Reference  
**5GB2H/01**

**You do not need any other materials.**

Total Marks

### Instructions

- Use **black** ink or ball-point pen.
- **Fill in the boxes** at the top of this page with your name, centre number and candidate number.
- In Section A, answer **all** questions.
- In Section B, answer **either** question 5 **or** 6.
- In Section C, answer **either** question 7 **or** 8.
- Answer the questions in the spaces provided  
– *there may be more space than you need.*

### Information

- The total mark for this paper is 78.
- The marks for **each** question are shown in brackets  
– *use this as a guide as to how much time to spend on each question.*
- Questions labelled with an **asterisk** (\*) are ones where the quality of your written communication will be assessed  
– *you should take particular care on these questions with your spelling, punctuation and grammar, as well as the clarity of expression.*
- The marks available for spelling, punctuation and grammar are clearly indicated.

### Advice

- Read each question carefully before you start to answer it.
- Check your answers if you have time at the end.

Turn over ►

P43079A

©2014 Pearson Education Ltd.

5/4/5/4



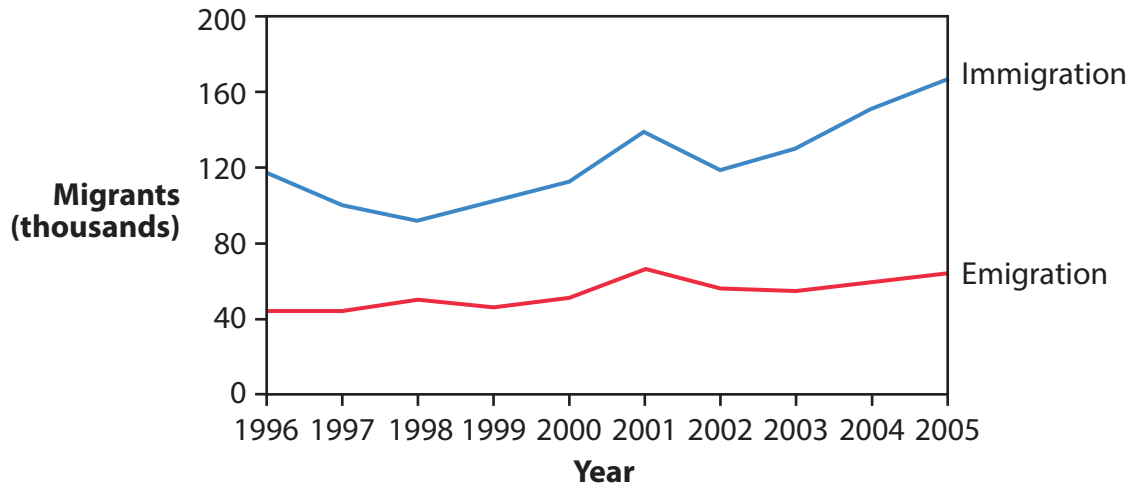
**PEARSON**

SECTION A – INTRODUCTION TO PEOPLE AND THE PLANET

Answer ALL questions in this section.

Topic 1: Population Dynamics

1 Figure 1 shows migration to and from Australia, 1996–2005.



(Source: © Peter Stalker (www.pstalker.com))

Figure 1

(a) Study Figure 1.

Outline **two** differences between migration to and from Australia.

(2)

1 .....

2 .....




(b) For a named developing country, explain its population **structure**.

You may draw a diagram to help your answer.

(4)

Named developing country .....



.....

.....

.....

.....

.....

.....

.....

.....

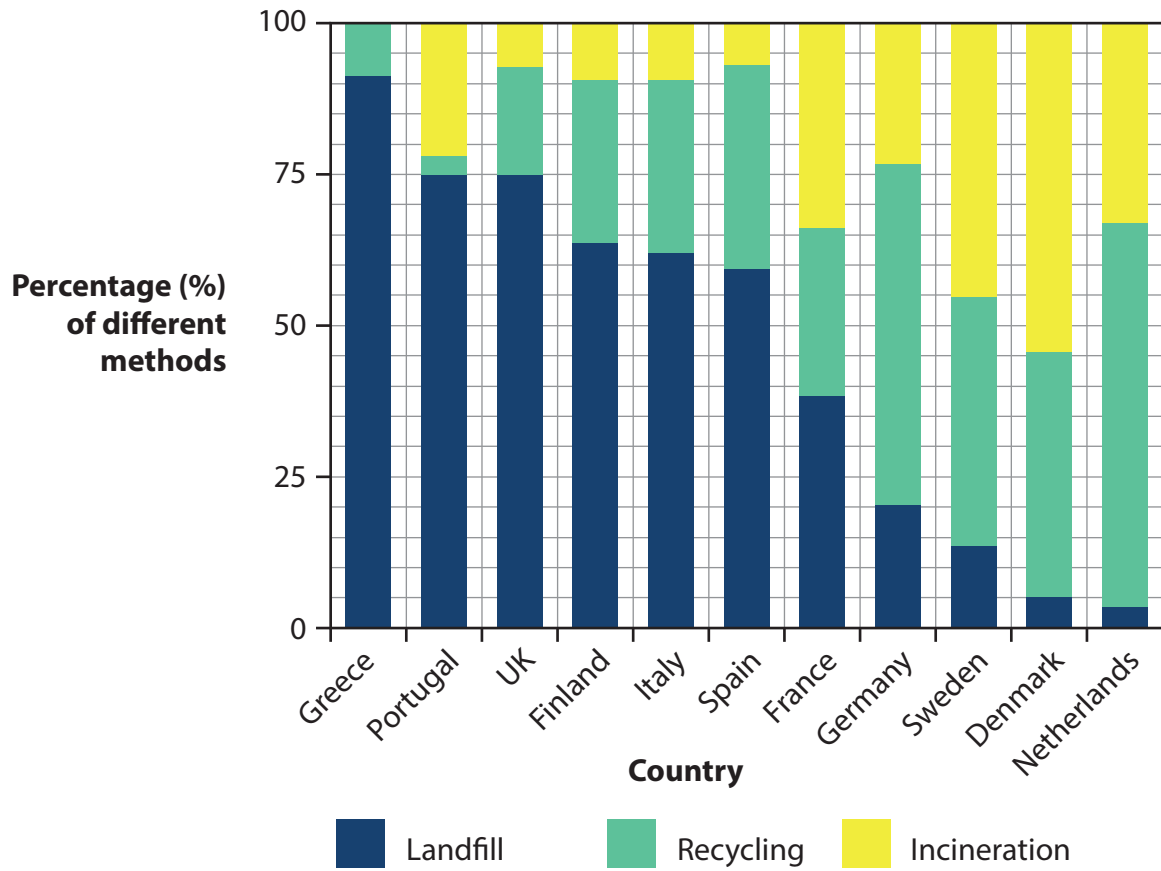
.....





## Topic 2: Consuming Resources

2 Figure 2 shows methods of waste disposal in selected European countries.



(Source: This information is licensed under the terms of the Open Government Licence [<http://www.nationalarchives.gov.uk/doc/open-government-licence/version/2/>])

**Figure 2**

(a) Study Figure 2.

Describe the variations in the percentage of waste that is recycled in different countries.

(2)

.....

.....

.....

.....



(b) For a named **non-renewable** resource, explain why consumption varies from place to place.

(4)

Named non-renewable resource .....

.....

.....

.....

.....

.....

.....

.....

.....

.....





### Topic 3: Globalisation

3 Figure 3 shows changes in the value of international trade between 2005 and 2013.

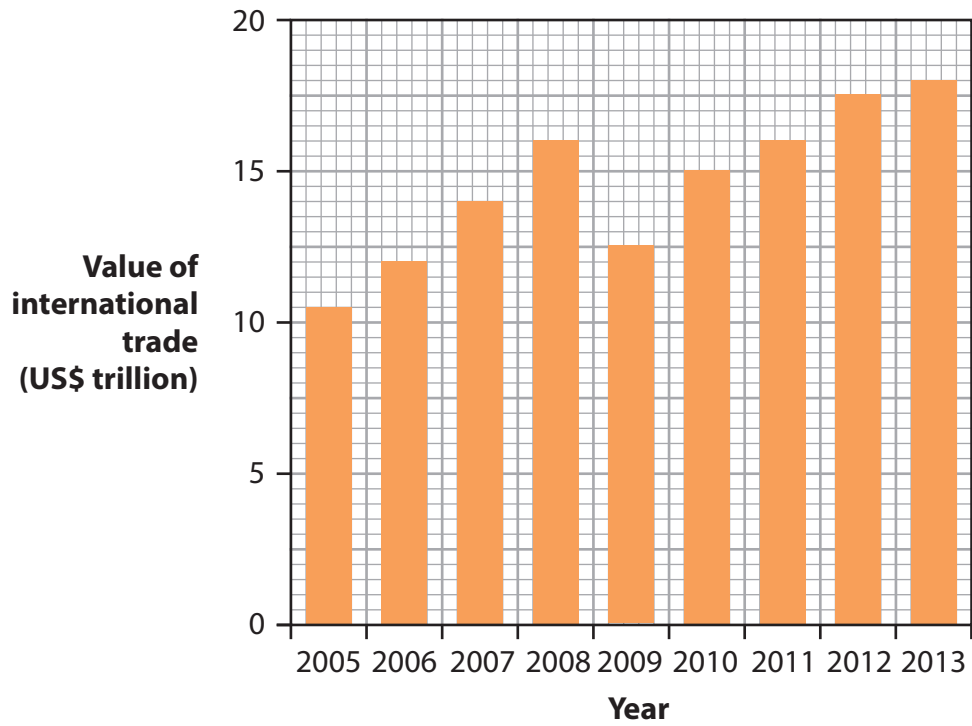


Figure 3

(a) Study Figure 3.

Describe the changes in international trade between 2005 and 2013.

(2)

.....

.....

.....

.....





(b) For a named transnational corporation (TNC), explain how it operates in different parts of the world.

(4)

Named TNC .....

.....

.....

.....

.....

.....

.....

.....

.....

.....

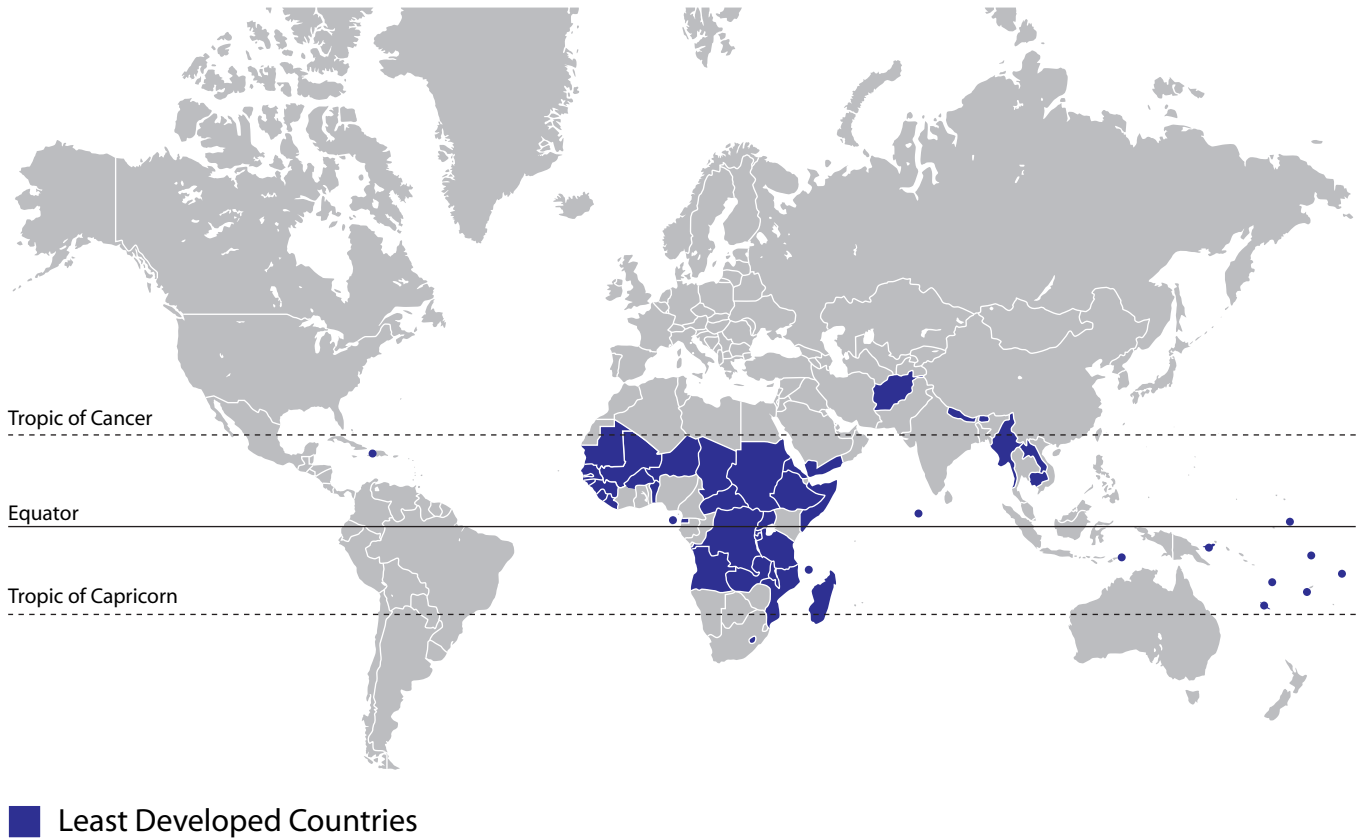
.....





### Topic 4: Development Dilemmas

4 Figure 4 shows the location of the 48 Least Developed Countries.



**Figure 4**

(a) Study Figure 4.

Describe the distribution of the Least Developed Countries.

(2)

.....

.....

.....

.....



(b) For a named developing country in Sub-Saharan Africa, describe its recent economic development.

(4)

Named country .....

.....

.....

.....

.....

.....

.....

.....

.....

.....





**SECTION B – SMALL-SCALE PEOPLE AND THE PLANET**

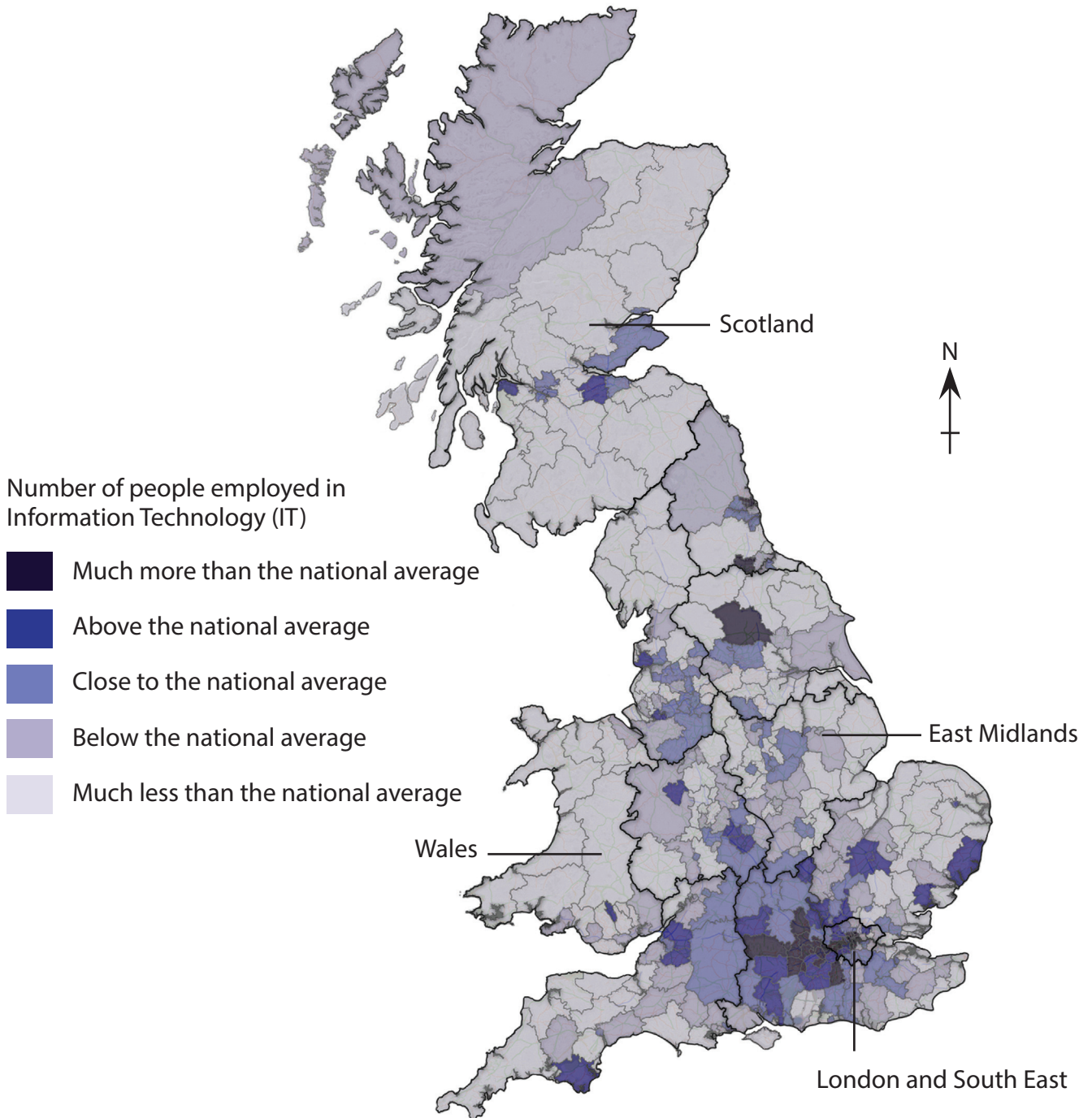
**Answer ONE question in this section.**

**Topic 5: The Changing Economy of the UK**

**If you answer Question 5 put a cross in the box  .**

**Spelling, punctuation and grammar will be assessed in 5\*(b).**

- 5** Figure 5 shows the distribution of jobs in Information Technology (IT) in England, Scotland and Wales in 2011.



**Figure 5**



(a) Study Figure 5.

(i) Describe the distribution of jobs in Information Technology.

(2)

.....

.....

.....

.....

(ii) Outline **one** reason why some regions have more IT jobs than others.

(2)

.....

.....

.....

.....







**BLANK PAGE**  
**QUESTION 6 IS ON THE NEXT PAGE.**

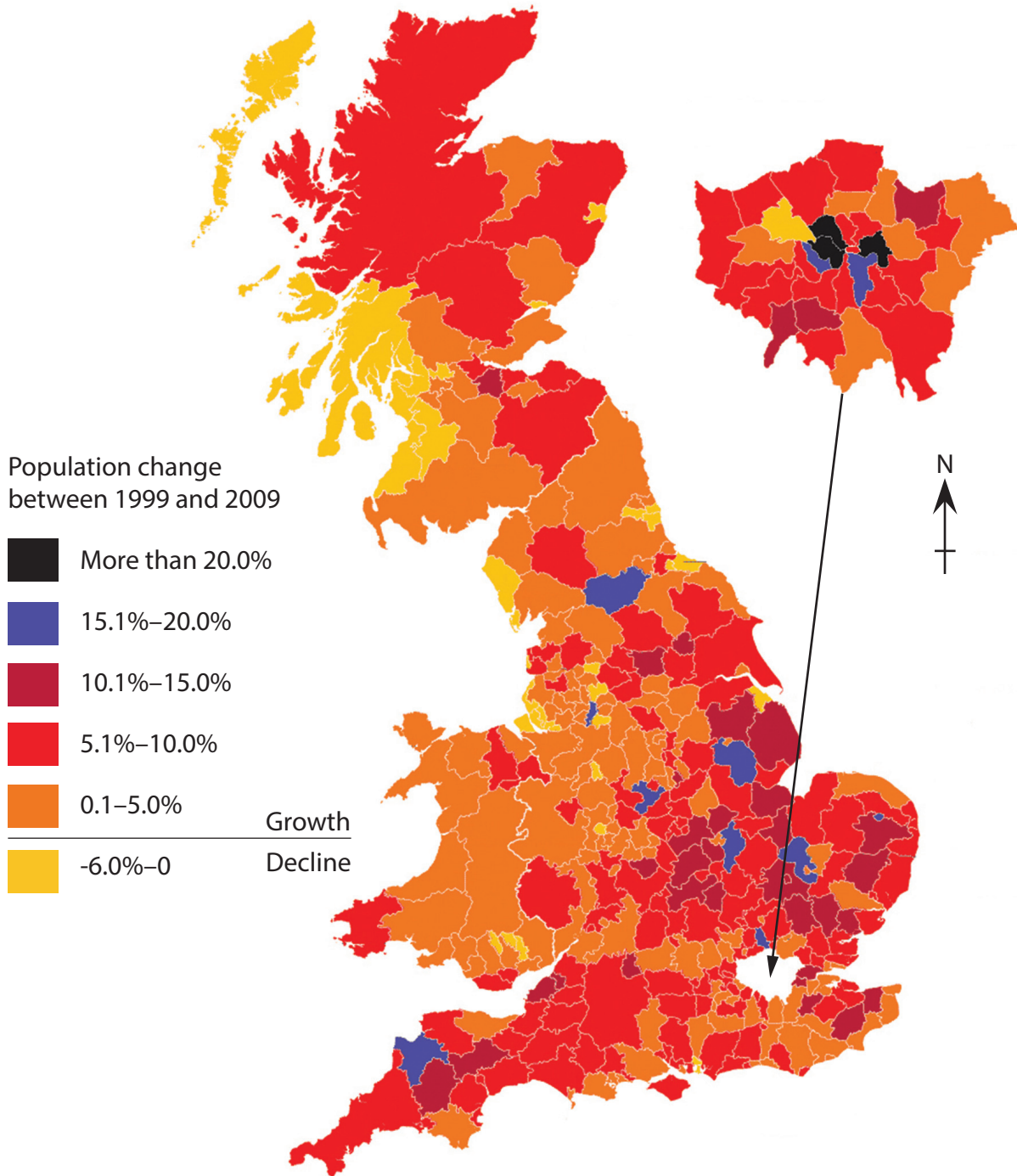


## Topic 6: Changing Settlements in the UK

If you answer Question 6 put a cross in the box  .

Spelling, punctuation and grammar will be assessed in 6\*(b).

- 6 Figure 6 shows population change by local authority area in England, Scotland and Wales between 1999 and 2009.



(Source: Copyright Guardian News & Media Ltd 2010)

Figure 6



(a) Study Figure 6.

(i) Describe the pattern of population change.

(2)

.....

.....

.....

.....

(ii) Outline **one** reason why the population of some rural areas has declined.

(2)

.....

.....

.....

.....





**BLANK PAGE**  
**SECTION C STARTS ON THE NEXT PAGE.**



**SECTION C – LARGE-SCALE PEOPLE AND THE PLANET**

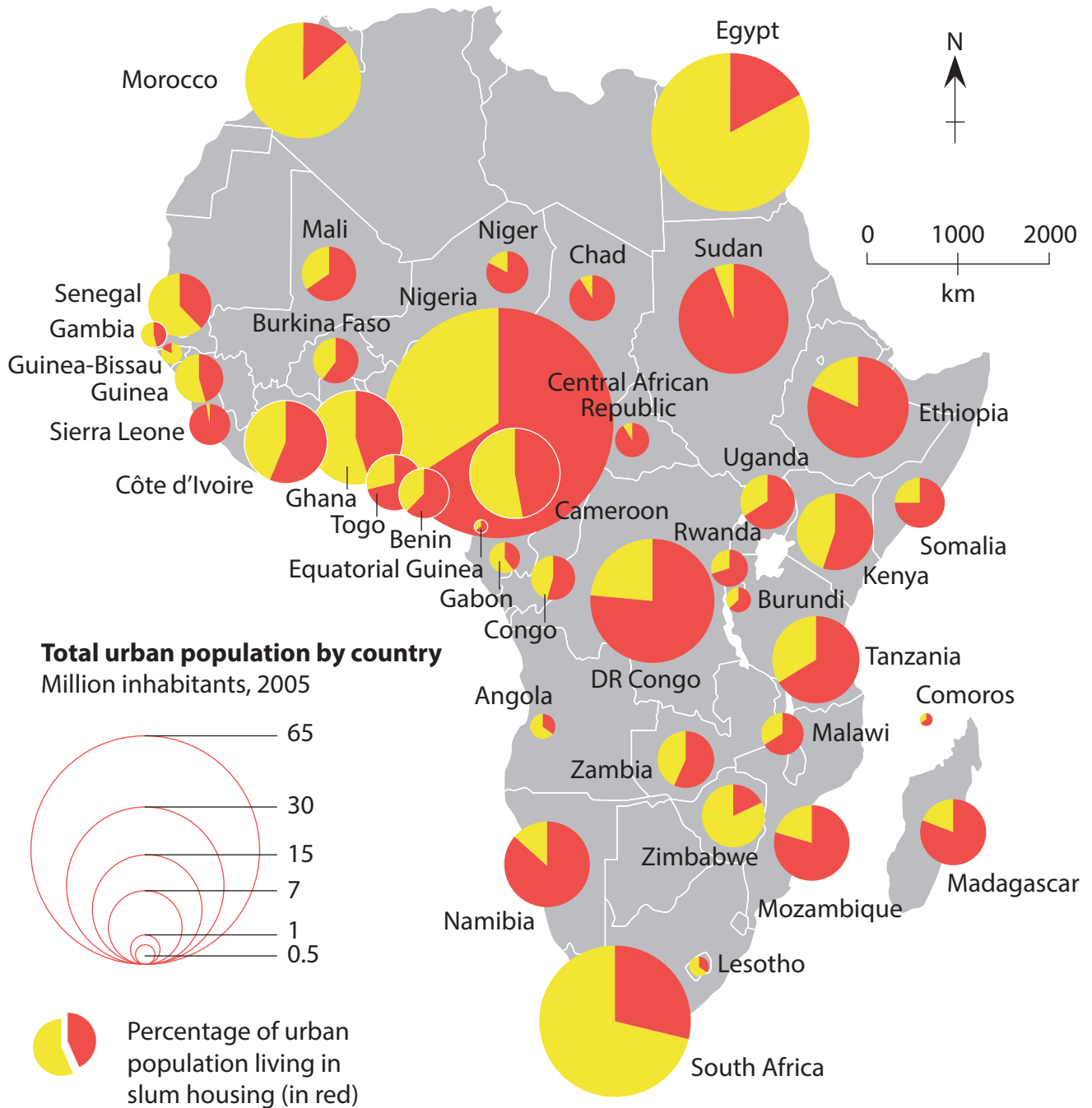
**Answer ONE question in this section.**

**Topic 7: The Challenges of an Urban World**

**If you answer Question 7 put a cross in the box  .**

**Spelling, punctuation and grammar will be assessed in 7\*(b).**

- 7** Figure 7 shows the size of the urban population and the percentage who lived in slum housing for selected African countries in 2005.



**Figure 7**



(a) Study Figure 7.

(i) Describe the general distribution of slum housing in Africa.

(2)

.....

.....

.....

.....

(ii) Suggest **one** reason why the percentage of the urban population living in slum housing varies across Africa.

(2)

.....

.....

.....

.....







**BLANK PAGE**  
**QUESTION 8 IS ON THE NEXT PAGE.**



## Topic 8: The Challenges of a Rural World

If you answer Question 8 put a cross in the box  .

Spelling, punctuation and grammar will be assessed in 8\*(b).

- 8 Figure 8 shows the percentage of United States farmers who had high-speed broadband connectivity in 2007.

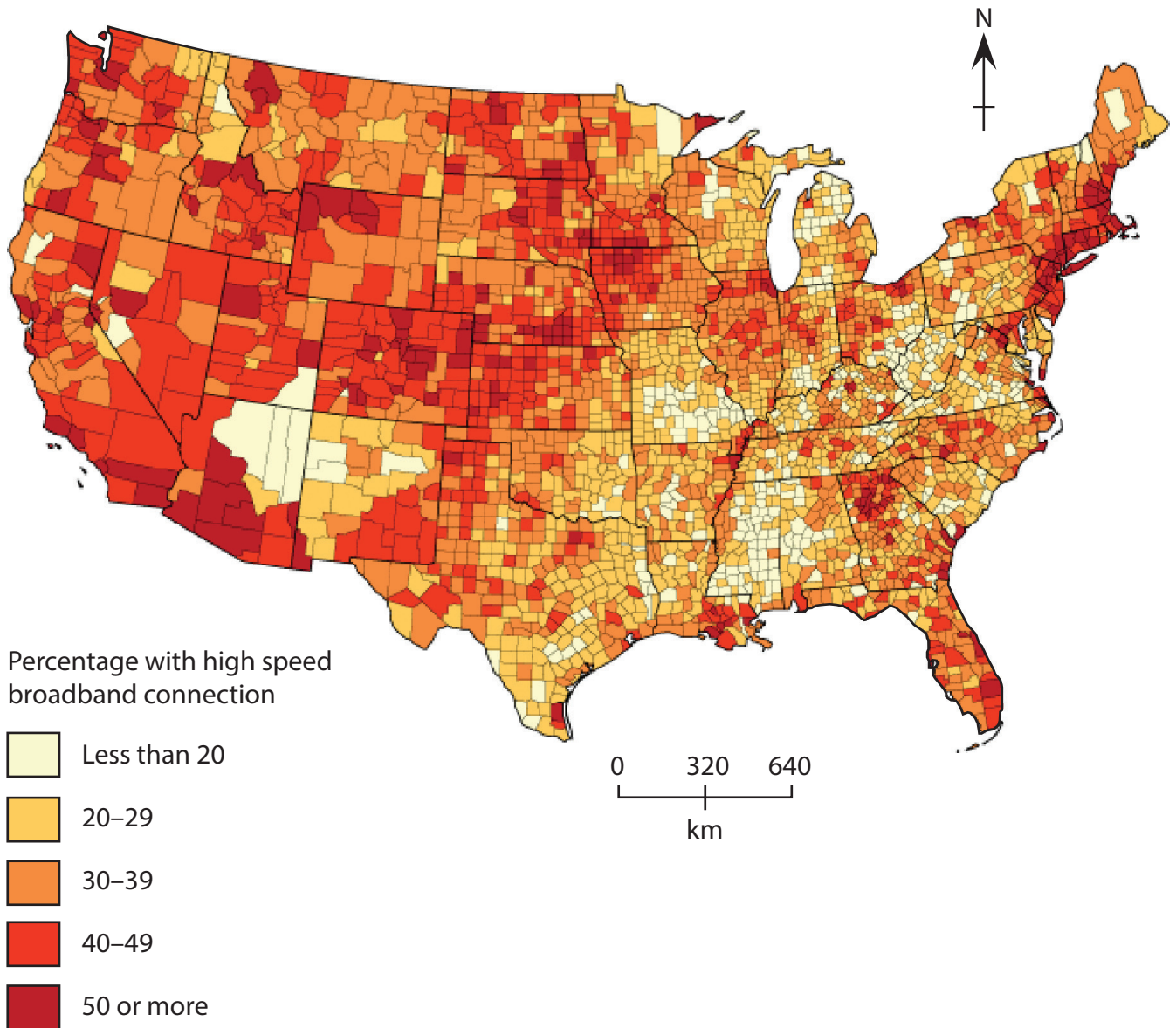


Figure 8



(a) Study Figure 8.

(i) Describe the pattern of farmers' access to high-speed broadband connectivity. (2)

.....

.....

.....

.....

(ii) Suggest **one** reason why rural isolation varies from place to place. (2)

.....

.....

.....

.....



