

Write your name here

Surname

Other names

Pearson
Edexcel GCSE

Centre Number

--	--	--	--	--	--

Candidate Number

--	--	--	--	--	--

Geography A

Unit 2: The Natural Environment

Higher Tier

Tuesday 6 June 2017 – Afternoon
Time: 1 hour 15 minutes

Paper Reference
5GA2H/01

You do not need any other materials.

Total Marks

Instructions

- Use **black** ink or ball-point pen.
- **Fill in the boxes** at the top of this page with your name, centre number and candidate number.
- In Section **A** answer **all** questions.
- In Section **B** answer **either** question 4 **or** 5.
- Answer the questions in the spaces provided
– *there may be more space than you need.*

Information

- The total mark for this paper is 69.
- The marks for **each** question are shown in brackets
– *use this as a guide as to how much time to spend on each question.*
- Questions labelled with an **asterisk** (*) are ones where the quality of your written communication will be assessed
– *you should take particular care on these questions with your spelling, punctuation and grammar, as well as the clarity of expression.*
- The marks available for spelling, punctuation and grammar are clearly indicated.

Advice

- Read each question carefully before you start to answer it.
- Check your answers if you have time at the end.

Turn over ►

P48694A

©2017 Pearson Education Ltd.

1/1/1/1/1



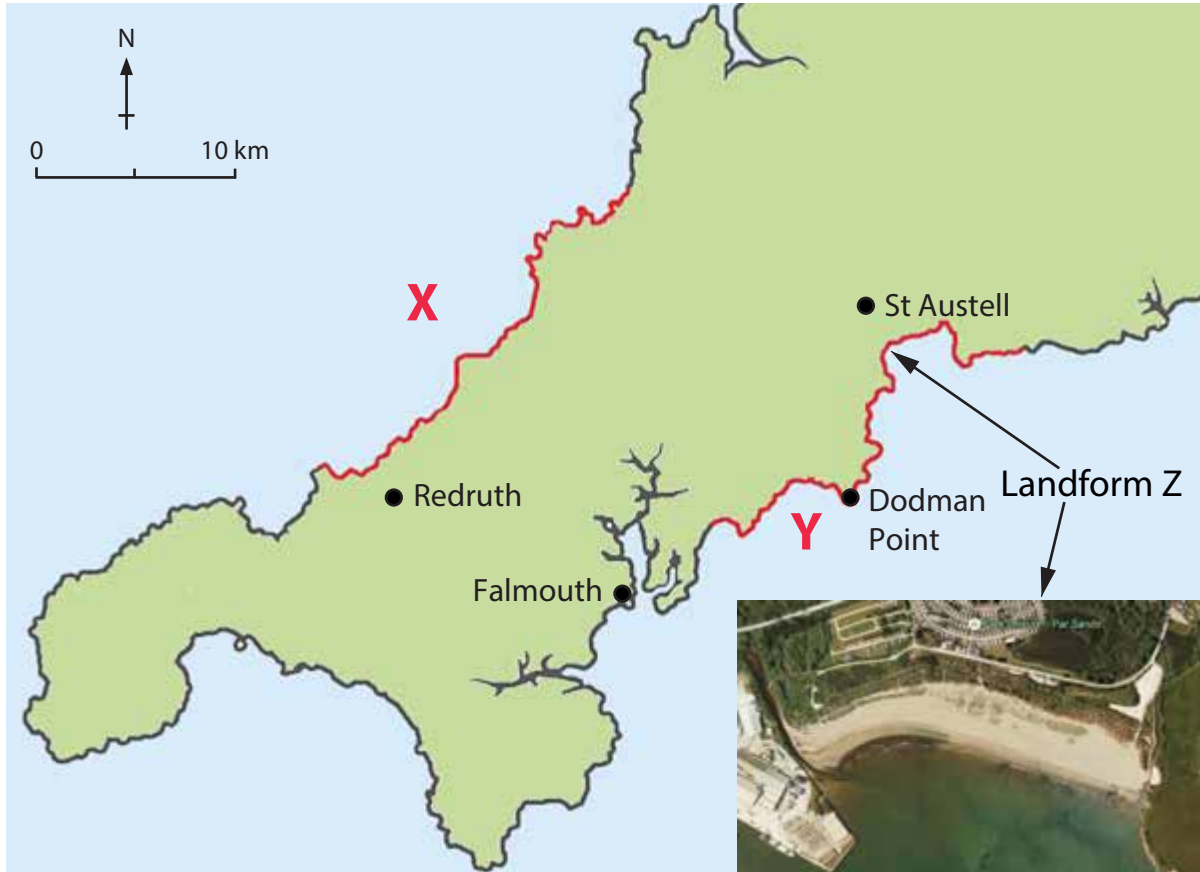
Pearson

SECTION A – THE PHYSICAL WORLD

Answer ALL questions in this section.

Topic 1: Coastal Landscapes

1 (a) Study Figure 1a.



(Source: © Google Earth)

Figure 1a

Two sections of coastline (X and Y) in Cornwall

(i) Compare coastlines X and Y.

(2)

.....

.....

.....

.....



(ii) Suggest reasons for the formation of the beach, Landform Z.

(3)

.....

.....

.....

.....

.....

.....

(b) Explain the management techniques used to protect a named area of coastline.

(4)

Named area of coastline

.....

.....

.....

.....

.....

.....

.....

.....

.....

DO NOT WRITE IN THIS AREA

DO NOT WRITE IN THIS AREA

DO NOT WRITE IN THIS AREA



(c) Study Figure 1b.

Location	Average erosion rate (m/year)	Geology	Type of coastal defences
Seaford (Sussex)	0.14	Chalk	Rip rap and beach replenishment
Trimingham (Norfolk)	1.5	Boulder clay	Wooden revetments, groynes and concrete sea wall

Figure 1b

Information about two coastal locations in England

Explain the possible reasons for the difference in average erosion rates shown in Figure 1b.

(6)

.....

.....

.....

.....

.....

.....

.....

.....

.....

.....

.....

.....

.....

.....

.....

.....

.....

.....

.....

.....

.....

.....

.....

DO NOT WRITE IN THIS AREA

DO NOT WRITE IN THIS AREA

DO NOT WRITE IN THIS AREA



DO NOT WRITE IN THIS AREA

DO NOT WRITE IN THIS AREA

DO NOT WRITE IN THIS AREA

(Total for Question 1 = 15 marks)



Topic 2: River Landscapes

2 Study Figure 2.

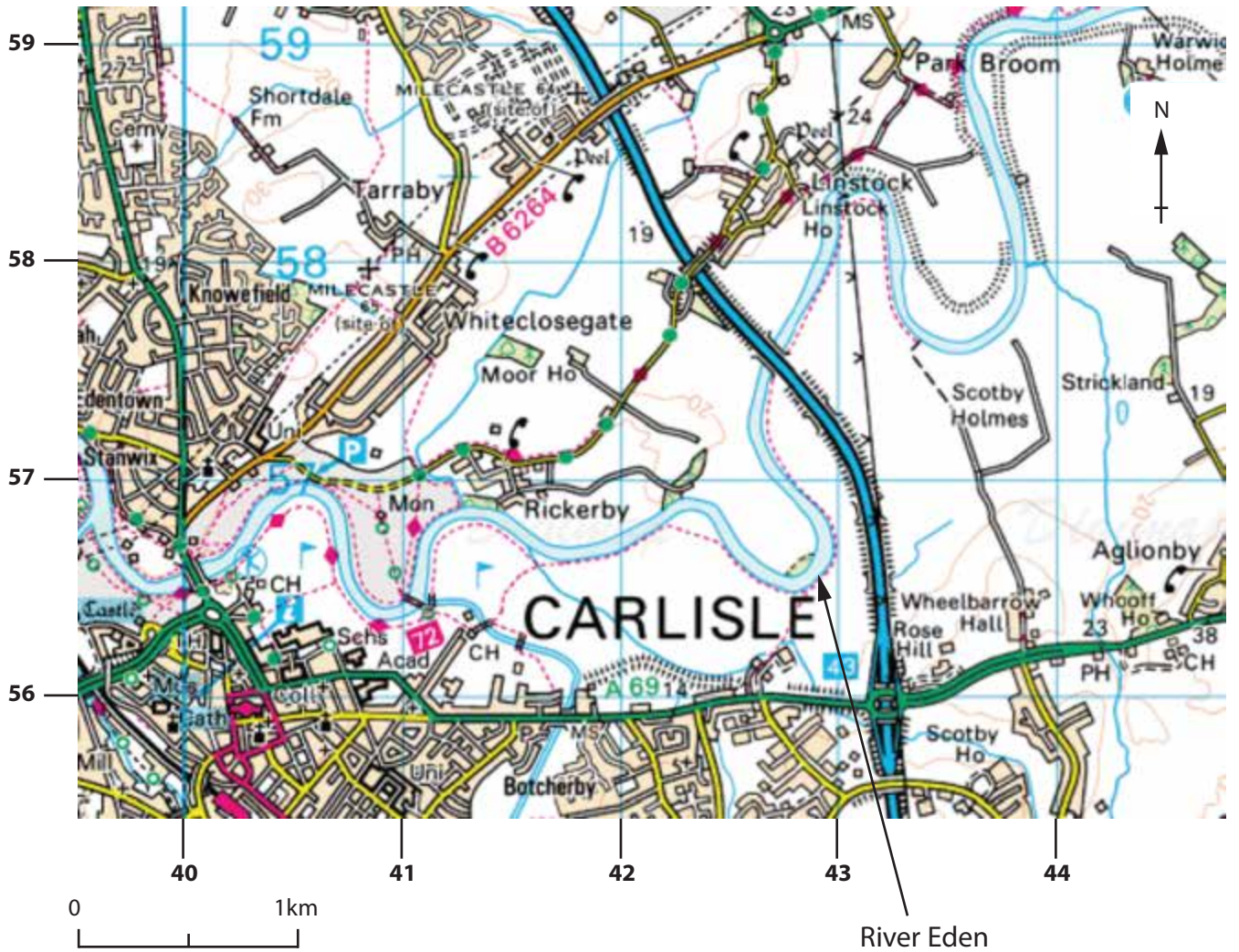


Figure 2

Ordnance Survey (OS) map extract of River Eden flowing through Cumbria



DO NOT WRITE IN THIS AREA

DO NOT WRITE IN THIS AREA

DO NOT WRITE IN THIS AREA

(a) (i) Identify the river landform shown at grid square 412565.

(1)

(ii) Outline **two** river processes on a meander such as the one in grid square 4357.

(4)

.....

.....

.....

.....

.....

.....

.....

.....

.....

.....

.....



(b) Draw an annotated diagram(s) to explain the formation of a levee.

(4)

DO NOT WRITE IN THIS AREA

DO NOT WRITE IN THIS AREA

DO NOT WRITE IN THIS AREA



(c) Using examples, explain the effects of river flooding on people and the environment.

(6)

DO NOT WRITE IN THIS AREA

DO NOT WRITE IN THIS AREA

DO NOT WRITE IN THIS AREA

Dotted lines for writing the answer.

(Total for Question 2 = 15 marks)



Topic 3: Tectonic Landscapes

3 (a) Define the term **earthquake focus**.

(2)

.....

.....

.....

DO NOT WRITE IN THIS AREA

DO NOT WRITE IN THIS AREA

DO NOT WRITE IN THIS AREA

(b) Study Figure 3a.



Figure 3a

A cartoon about the Haiti earthquake in 2010

Describe the message shown in Figure 3a.

(3)

.....

.....

.....

.....

.....



DO NOT WRITE IN THIS AREA

DO NOT WRITE IN THIS AREA

DO NOT WRITE IN THIS AREA

(c) Study Figure 3b.



(Source: © Volcano-Adventures / VolcanoDiscovery, Inh. Tom Pfeiffer)

Figure 3b

A volcano on a convergent (destructive) plate boundary

Explain **two** other characteristic physical features found at this type of plate boundary.

(4)

.....

.....

.....

.....

.....

.....

.....

.....

.....



(d) Explain the effects of **either** a named volcanic eruption **or** an earthquake.

(6)

Named volcanic eruption **or** earthquake

Area with horizontal dotted lines for writing the answer.

(Total for Question 3 = 15 marks)

TOTAL FOR SECTION A = 45 MARKS

DO NOT WRITE IN THIS AREA

DO NOT WRITE IN THIS AREA

DO NOT WRITE IN THIS AREA



SECTION B – ENVIRONMENTAL ISSUES

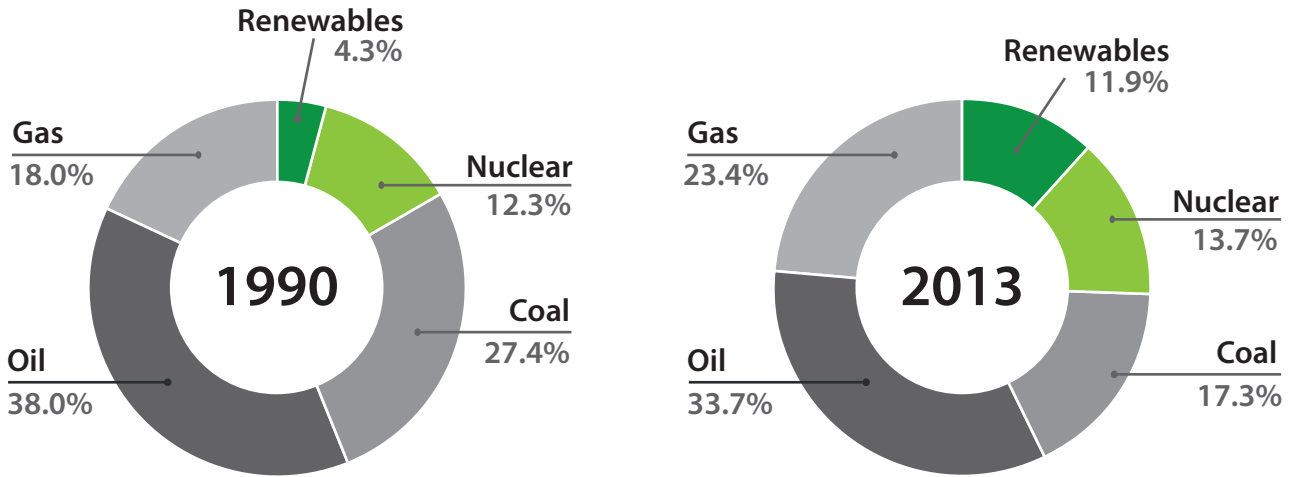
Answer EITHER Question 4 OR Question 5.

Topic 4: A Wasteful World

Spelling, punctuation and grammar will be assessed in 4*(d).

If you answer Question 4 put a cross in the box .

4 (a) Study Figure 4a.



(Source: from <http://www.carbonbrief.org/seven-charts-showing-how-the-eus-energy-use-is-being-transformed>)

Figure 4a

The EU energy mix in 1990 and 2013

Suggest **two** reasons for the changes shown in Figure 4a.

(4)

.....

.....

.....

.....

.....

.....

.....

.....

.....

DO NOT WRITE IN THIS AREA

DO NOT WRITE IN THIS AREA

DO NOT WRITE IN THIS AREA



(b) Explain **two** ways a country's energy consumption is affected by income and wealth.

(4)

.....

.....

.....

.....

.....

.....

.....

.....

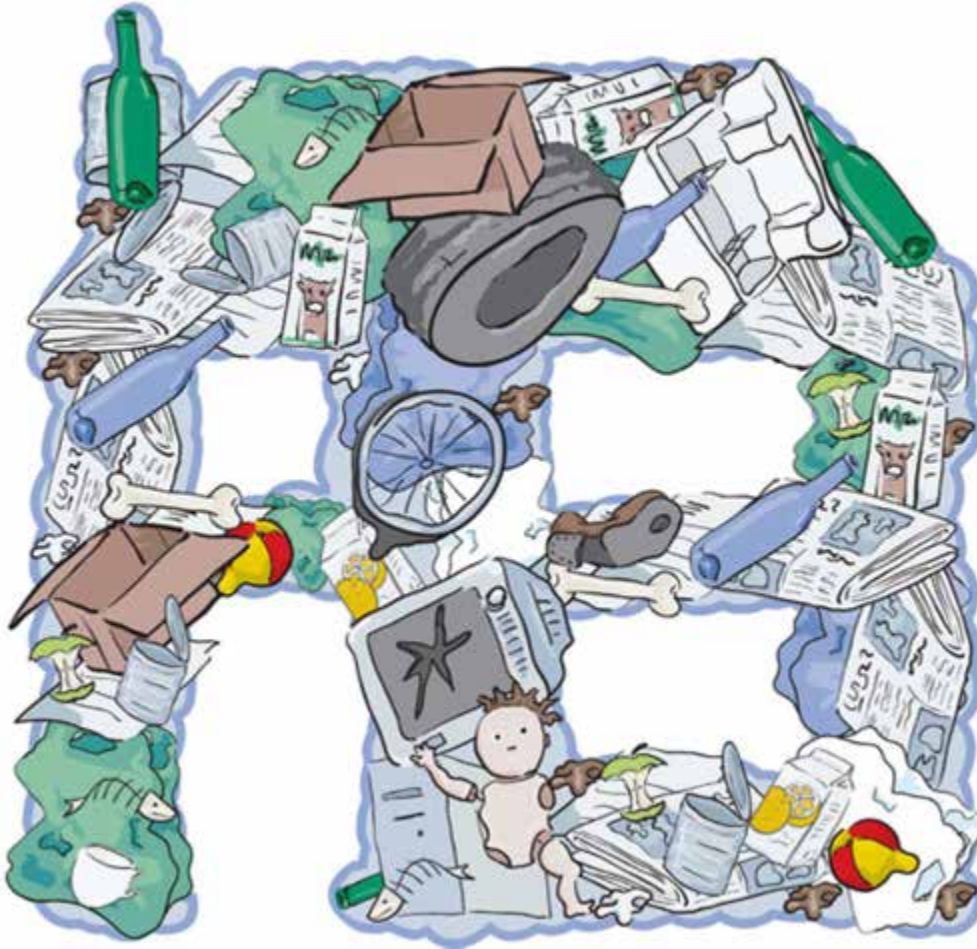
DO NOT WRITE IN THIS AREA

DO NOT WRITE IN THIS AREA

DO NOT WRITE IN THIS AREA



(c) Study Figure 4b.



(Source: from © Meriel Jane Weissman/Getty Images)

Figure 4b

Examples of domestic waste in a High Income Country (HIC)

(i) Define the term **throw away society**.

(2)

.....

.....

.....

.....

DO NOT WRITE IN THIS AREA

DO NOT WRITE IN THIS AREA

DO NOT WRITE IN THIS AREA



(ii) Explain the methods used to recycle waste on a local scale.

Use examples in your answer.

(4)

.....

.....

.....

.....

.....

.....

.....

.....

DO NOT WRITE IN THIS AREA

DO NOT WRITE IN THIS AREA

DO NOT WRITE IN THIS AREA



DO NOT WRITE IN THIS AREA

DO NOT WRITE IN THIS AREA

DO NOT WRITE IN THIS AREA

*(d) Examine reasons for the different attitudes towards the exploitation of a named non-renewable energy source.

(6)

Named non-renewable energy source

.....

.....

.....

.....

.....

.....

.....

.....

.....

.....

.....

.....

.....

.....

.....

.....

.....

.....

.....

.....

.....

.....

(Total for spelling, punctuation and grammar = 4 marks)
(Total for Question 4 = 24 marks)



Topic 5: A Watery World

Spelling, punctuation and grammar will be assessed in 5*(d).

If you answer Question 5 put a cross in the box .

5 Study Figure 5a.

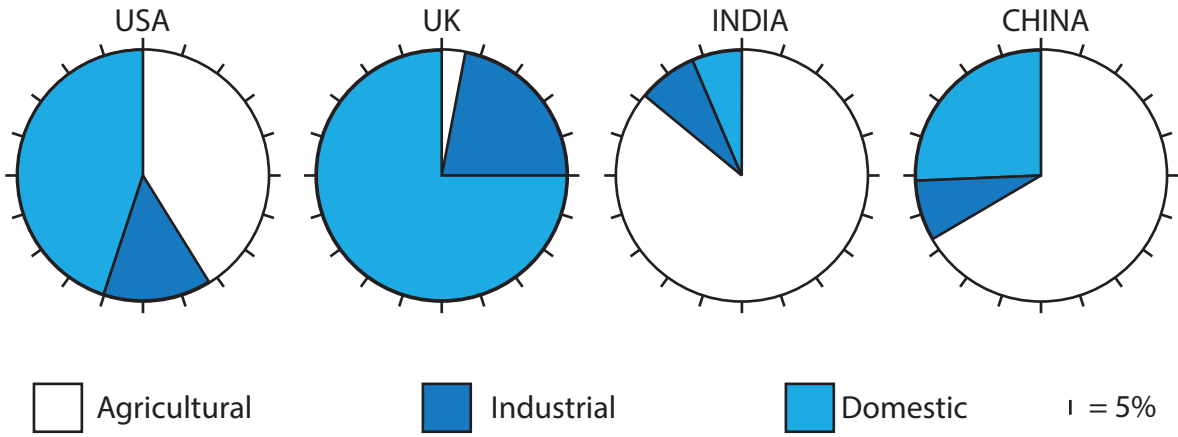


Figure 5a

Water consumption in selected countries by sector, 2011

(a) Suggest **two** reasons for the differences shown in Figure 5a.

(4)

.....

.....

.....

.....

.....

.....

.....

.....

.....

DO NOT WRITE IN THIS AREA

DO NOT WRITE IN THIS AREA

DO NOT WRITE IN THIS AREA



(b) Explain **two** ways in which water supply in High Income Countries (HICs) is affected by rainfall.

(4)

.....

.....

.....

.....

.....

.....

.....

.....

DO NOT WRITE IN THIS AREA

DO NOT WRITE IN THIS AREA

DO NOT WRITE IN THIS AREA



(c) Study Figure 5b.

Method X



Method Y



(Source: from thewaterproject.org/images/hand_dug.jpg)

Figure 5b

Two appropriate technologies to manage water in Low Income Countries (LICs)

(i) Define the term **appropriate technology**.

(2)

.....

.....

.....

.....

(ii) Explain how industrial water use is managed in HICs.

Use examples in your answer.

(4)

.....

.....

.....

.....

.....

.....

.....

.....

.....

.....

DO NOT WRITE IN THIS AREA

DO NOT WRITE IN THIS AREA

DO NOT WRITE IN THIS AREA



DO NOT WRITE IN THIS AREA

DO NOT WRITE IN THIS AREA

DO NOT WRITE IN THIS AREA

***(d)** Examine reasons for the different views about the value of a named water-management scheme.

(6)

Named water-management scheme

Lined writing area with 20 horizontal dotted lines for student response.

(Total for spelling, punctuation and grammar = 4 marks)

(Total for Question 5 = 24 marks)

TOTAL FOR SECTION B = 24 MARKS

TOTAL FOR PAPER = 69 MARKS



DO NOT WRITE IN THIS AREA

DO NOT WRITE IN THIS AREA

DO NOT WRITE IN THIS AREA

BLANK PAGE



DO NOT WRITE IN THIS AREA

DO NOT WRITE IN THIS AREA

DO NOT WRITE IN THIS AREA

BLANK PAGE



P 4 8 6 9 4 A 0 2 3 2 4

DO NOT WRITE IN THIS AREA

DO NOT WRITE IN THIS AREA

DO NOT WRITE IN THIS AREA

BLANK PAGE

Every effort has been made to contact copyright holders to obtain their permission for the use of copyright material. Pearson Education Ltd. will, if notified, be happy to rectify any errors or omissions and include any such rectifications in future editions.

