

Write your name here

Surname

Other names

Pearson
Edexcel GCSE

Centre Number

--	--	--	--	--

Candidate Number

--	--	--	--	--

Geography A

Unit 2: The Natural Environment

Higher Tier

Wednesday 8 June 2016 – Afternoon
Time: 1 hour 15 minutes

Paper Reference
5GA2H/01

You do not need any other materials.

Total Marks

Instructions

- Use **black** ink or ball-point pen.
- **Fill in the boxes** at the top of this page with your name, centre number and candidate number.
- In Section **A** answer **all** questions.
- In Section **B** answer **either** question 4 **or** 5.
- Answer the questions in the spaces provided
– *there may be more space than you need.*

Information

- The total mark for this paper is 69.
- The marks for **each** question are shown in brackets
– *use this as a guide as to how much time to spend on each question.*
- Questions labelled with an **asterisk** (*) are ones where the quality of your written communication will be assessed
– *you should take particular care on these questions with your spelling, punctuation and grammar, as well as the clarity of expression.*
- The marks available for spelling, punctuation and grammar are clearly indicated.

Advice

- Read each question carefully before you start to answer it.
- Check your answers if you have time at the end.

Turn over ►

P46467A

©2016 Pearson Education Ltd.

1/1/1/1/1/e2



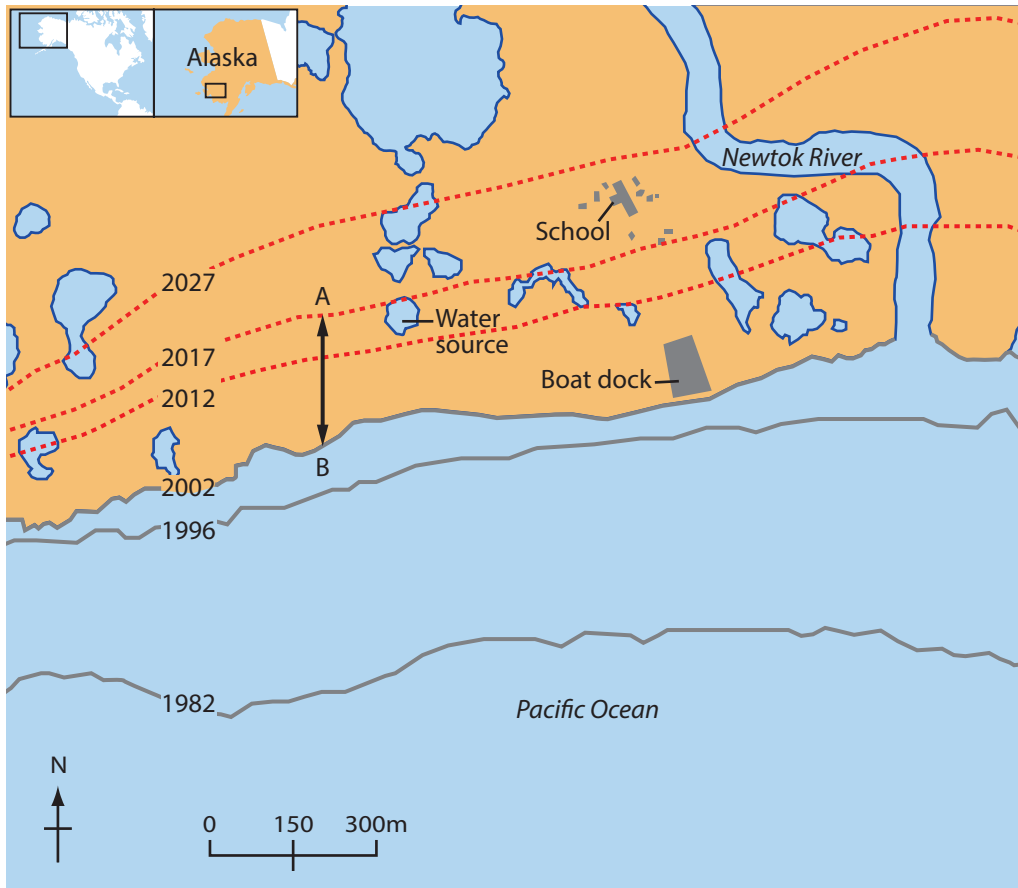
PEARSON

SECTION A – THE PHYSICAL WORLD

Answer ALL questions in this Section.

Topic 1: Coastal Landscapes

1 Study Figure 1a.



- Coastline position
- Projected coastline position
- Fresh water
- Buildings

Figure 1a

The past and projected coastline at Newtok, Alaska 2002.

DO NOT WRITE IN THIS AREA

DO NOT WRITE IN THIS AREA

DO NOT WRITE IN THIS AREA



DO NOT WRITE IN THIS AREA

DO NOT WRITE IN THIS AREA

DO NOT WRITE IN THIS AREA

(a) (i) Figure 1a shows a rapidly receding coastline.

What is the distance between points A and B?

(1)

..... metres

(ii) Suggest how the rapid recession of this coastline has an impact on both people and the environment.

(4)

.....

.....

.....

.....

.....

.....

.....

.....

.....

.....

(b) Outline the processes of weathering and mass movement on the coast.

(4)

.....

.....

.....

.....

.....

.....

.....

.....

.....

.....



Topic 2: River Landscapes

2 (a) Define the following drainage basin terms:

(2)

Confluence

.....

.....

Watershed

.....

.....

DO NOT WRITE IN THIS AREA

DO NOT WRITE IN THIS AREA

DO NOT WRITE IN THIS AREA



(b) Study Figure 2a.



Figure 2a

A photograph of river landforms in Iceland

Identify a river landform in Figure 2a.

Describe the role of erosion in the formation of your chosen landform.

(3)

Chosen river landform

.....

.....

.....

.....

.....

.....



(c) Study Figure 2b.

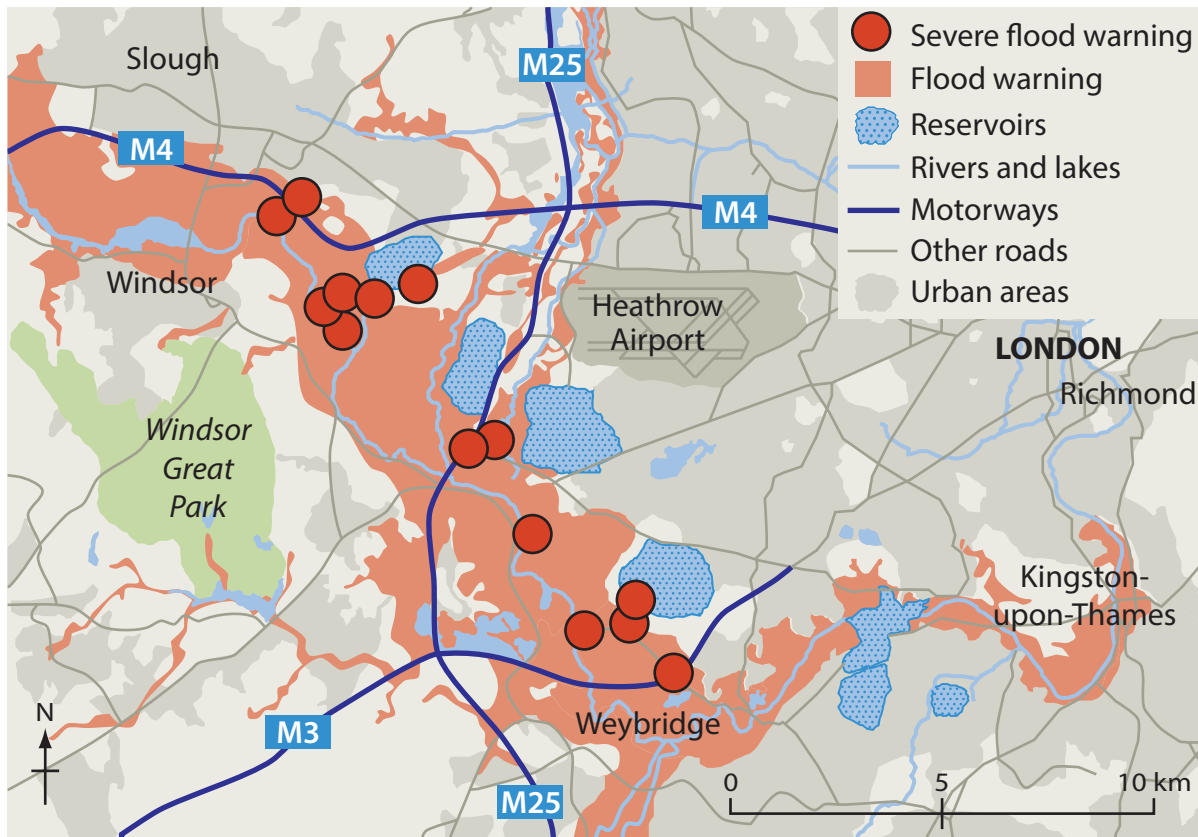


Figure 2b

Flood warnings around south west London, February 2014

Using Figure 2b, suggest the impacts of the possible flooding on people.

(4)

.....

.....

.....

.....

.....

.....

.....

.....

.....



DO NOT WRITE IN THIS AREA

DO NOT WRITE IN THIS AREA

DO NOT WRITE IN THIS AREA

BLANK PAGE
QUESTION 3 BEGINS ON THE NEXT PAGE.



Topic 3: Tectonic Landscapes

3 (a) Describe the global distribution of earthquakes.

(2)

Study Figure 3a.

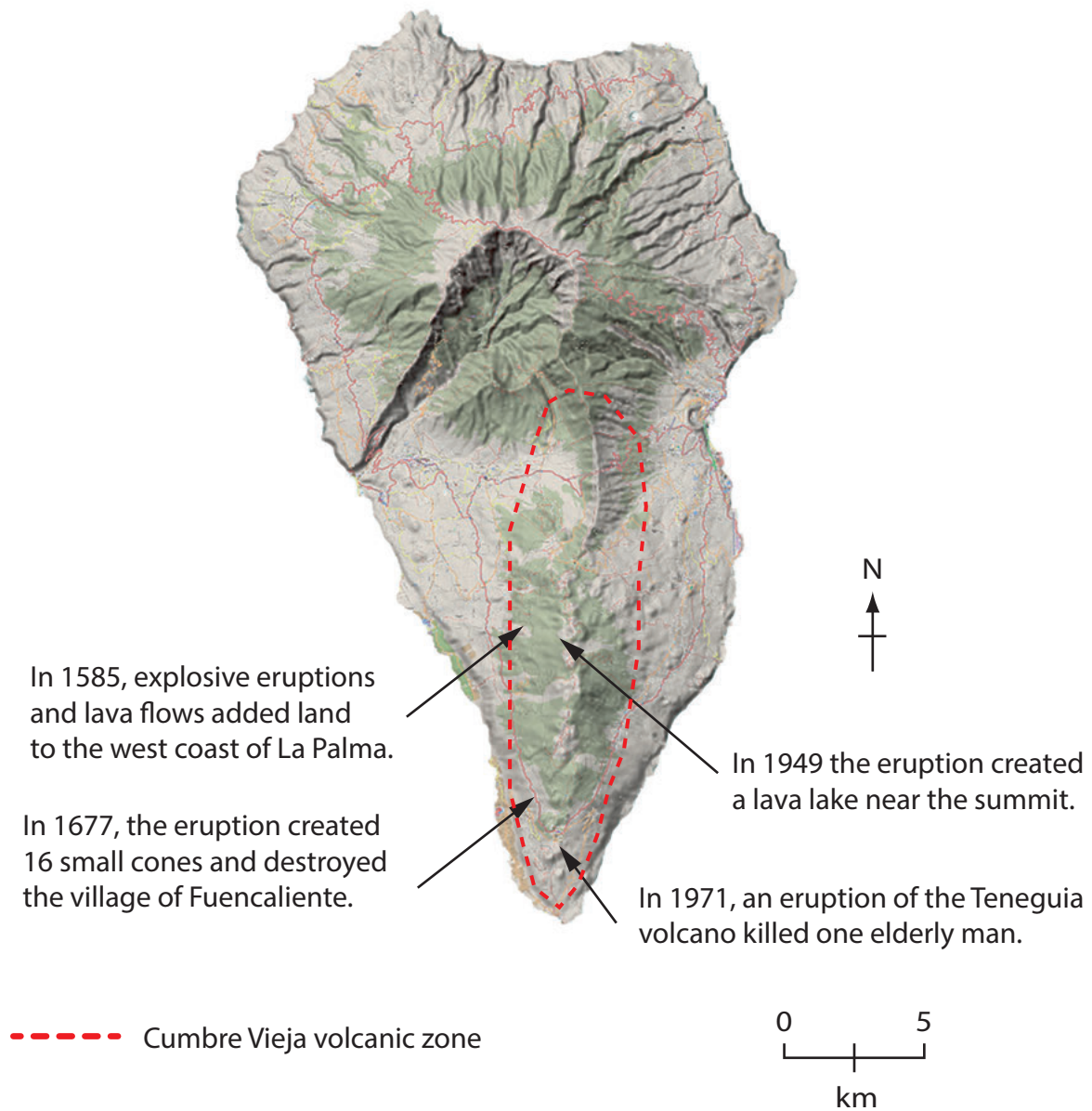


Figure 3a

Map showing some of the historic eruptions on the island of La Palma, Canary Islands

DO NOT WRITE IN THIS AREA

DO NOT WRITE IN THIS AREA

DO NOT WRITE IN THIS AREA



(b) Using Figure 3a, describe the impact of this volcanic activity on the environment.

(3)

.....

.....

.....

.....

.....

.....

(c) Use an annotated diagram(s) to explain the formation of a hotspot (volcanic island).

(4)

DO NOT WRITE IN THIS AREA

DO NOT WRITE IN THIS AREA

DO NOT WRITE IN THIS AREA



DO NOT WRITE IN THIS AREA

DO NOT WRITE IN THIS AREA

DO NOT WRITE IN THIS AREA

BLANK PAGE
SECTION B BEGINS ON THE NEXT PAGE.



SECTION B – ENVIRONMENTAL ISSUES

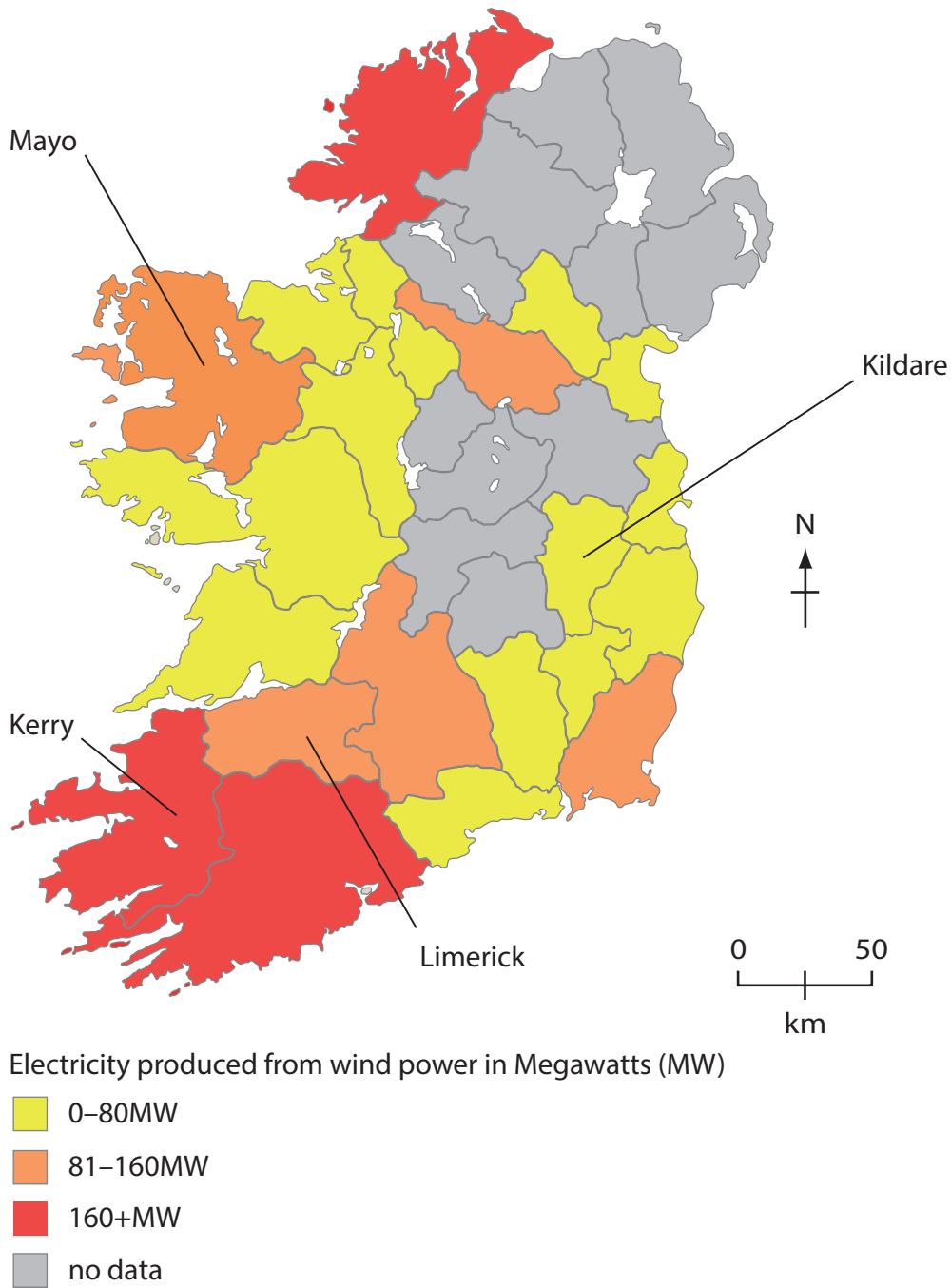
Answer EITHER Question 4 OR Question 5.

Topic 4: A Wasteful World

Spelling, punctuation and grammar will be assessed in 4*(e)

If you answer Question 4 put a cross in the box .

4 Study Figure 4a.



(Source: © Copyright Guardian News & Media Ltd 2012)

Figure 4a

Electricity (MW) produced from wind energy in selected Irish counties, 2012

DO NOT WRITE IN THIS AREA

DO NOT WRITE IN THIS AREA

DO NOT WRITE IN THIS AREA



DO NOT WRITE IN THIS AREA

DO NOT WRITE IN THIS AREA

DO NOT WRITE IN THIS AREA

(a) Suggest reasons for the pattern shown in Figure 4a.

(3)

.....

.....

.....

.....

.....

.....

(b) Explain the attitudes of individuals and governments to the use of renewable energy resources.

(4)

.....

.....

.....

.....

.....

.....

.....

.....

.....



(c) Study Figure 4b.

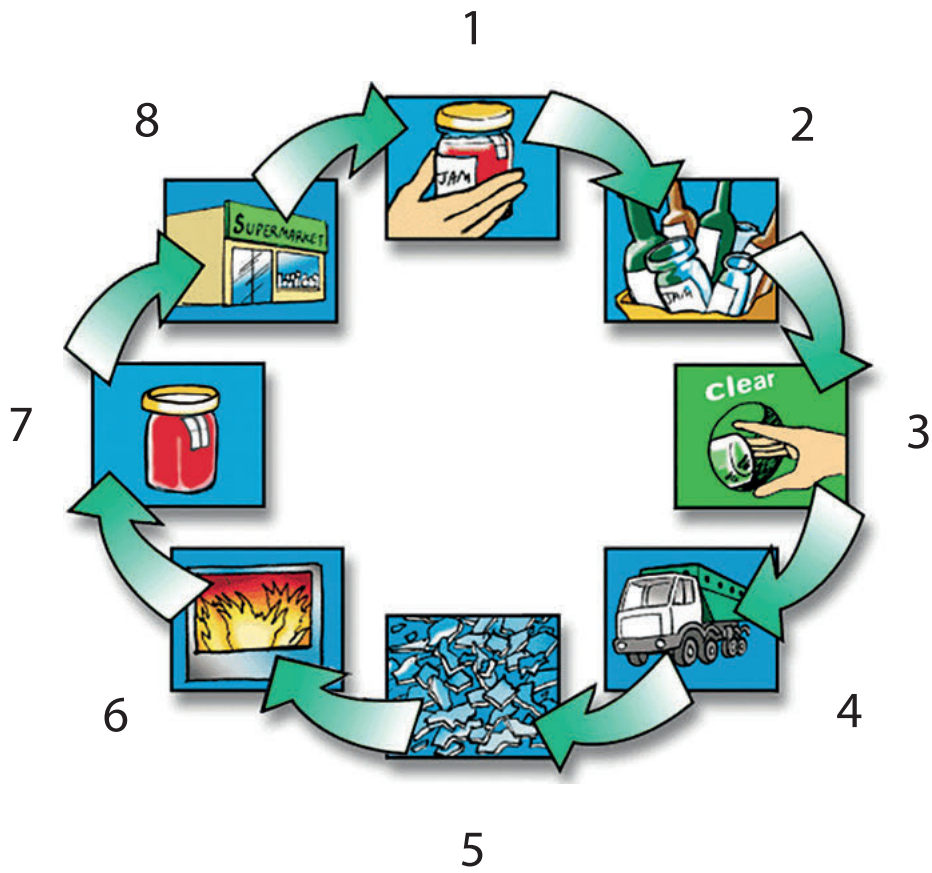


Figure 4b

The process of glass recycling on a local scale

Outline **one** advantage of recycling materials such as glass.

(3)

.....

.....

.....

.....

.....

.....

DO NOT WRITE IN THIS AREA

DO NOT WRITE IN THIS AREA

DO NOT WRITE IN THIS AREA



DO NOT WRITE IN THIS AREA

DO NOT WRITE IN THIS AREA

DO NOT WRITE IN THIS AREA

(d) Explain why a named High Income Country (HIC) uses different methods to dispose of its solid waste.

(4)

Named HIC

.....

.....

.....

.....

.....

.....

.....

.....

.....



Topic 5: A Watery World

Spelling, punctuation and grammar will be assessed in 5*(e).

If you answer Question 5 put a cross in the box .

5 Study Figure 5a.

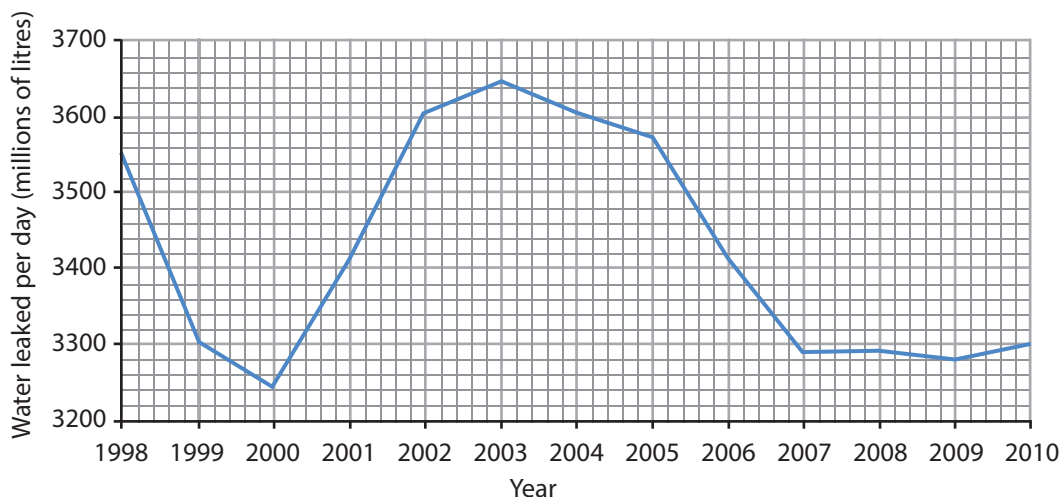


Figure 5a

Water leaked per day (millions of litres) in the UK, 1998–2010

(a) Suggest reasons for water leakages shown in Figure 5a.

(3)

.....

.....

.....

.....

.....

.....

DO NOT WRITE IN THIS AREA

DO NOT WRITE IN THIS AREA

DO NOT WRITE IN THIS AREA



(b) Explain **two** reasons for water supply problems in HICs.

(4)

.....

.....

.....

.....

.....

.....

.....

.....

DO NOT WRITE IN THIS AREA

DO NOT WRITE IN THIS AREA

DO NOT WRITE IN THIS AREA



(c) Study Figure 5b.

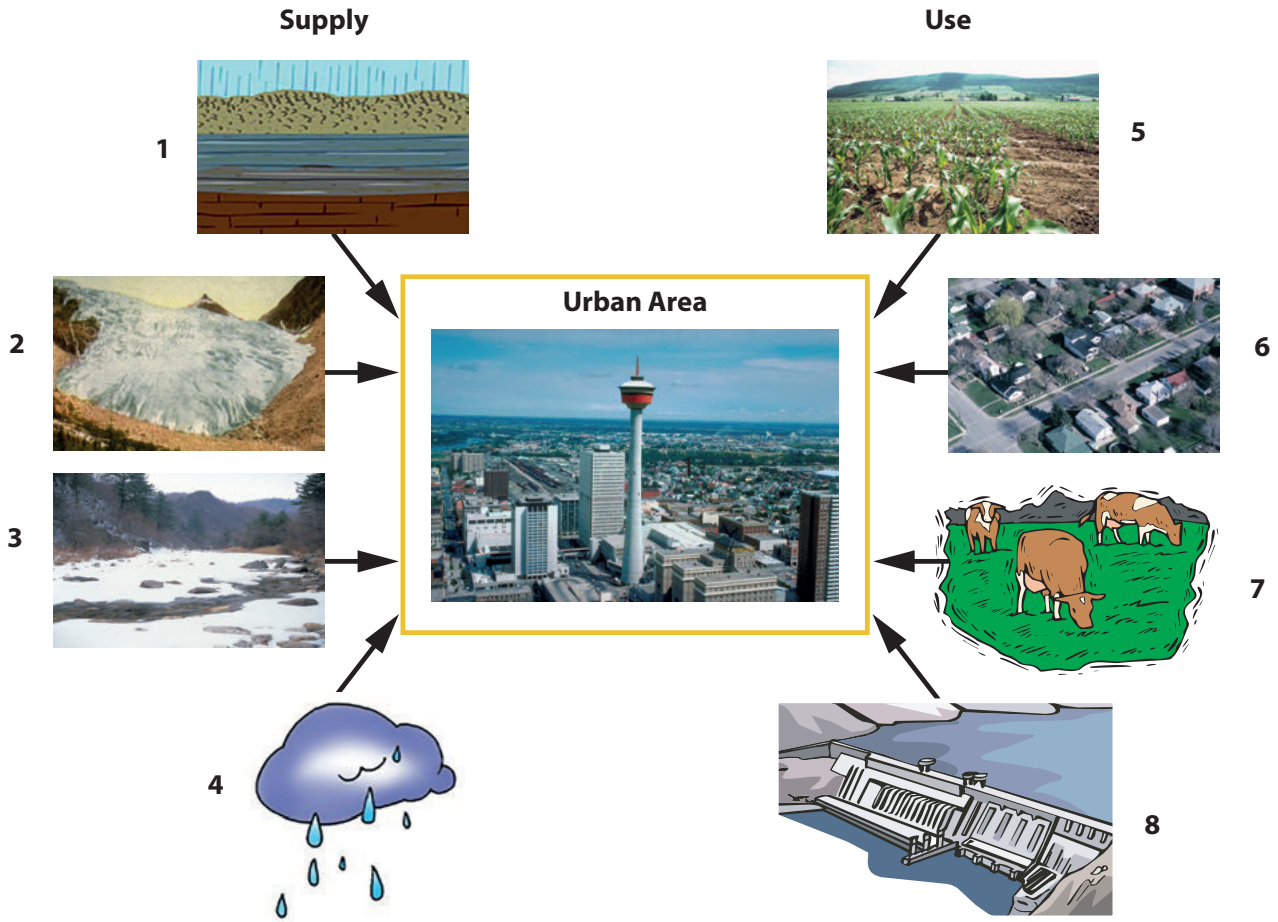


Figure 5b

Water supply and use in a large city and the surrounding area

Outline **one** way water use is managed in an urban area.

(3)

.....

.....

.....

.....

.....

.....



(d) Using examples, explain the different methods used to obtain water on a local scale.

(4)

.....

.....

.....

.....

.....

.....

.....

.....

DO NOT WRITE IN THIS AREA

DO NOT WRITE IN THIS AREA

DO NOT WRITE IN THIS AREA



DO NOT WRITE IN THIS AREA

DO NOT WRITE IN THIS AREA

DO NOT WRITE IN THIS AREA

BLANK PAGE

Every effort has been made to contact copyright holders to obtain their permission for the use of copyright material. Pearson Education Ltd. will, if notified, be happy to rectify any errors or omissions and include any such rectifications in future editions.

