

Write your name here

Surname

Other names

Pearson
Edexcel GCSE

Centre Number

--	--	--	--	--

Candidate Number

--	--	--	--	--

Geography A

Unit 2: The Natural Environment

Foundation Tier

Wednesday 3 June 2015 – Afternoon

Time: 1 hour 15 minutes

Paper Reference

5GA2F/01

You must have:

Resource Booklet (enclosed)

Total Marks

--

Instructions

- Use **black** ink or ball-point pen.
- **Fill in the boxes** at the top of this page with your name, centre number and candidate number.
- In Section **A** answer **all** questions.
- In Section **B** answer **either** question 4 **or** 5.
- Answer the questions in the spaces provided
– *there may be more space than you need.*

Information

- The total mark for this paper is 69.
- The marks for **each** question are shown in brackets
– *use this as a guide as to how much time to spend on each question.*
- Questions labelled with an **asterisk** (*) are ones where the quality of your written communication will be assessed
– *you should take particular care on these questions with your spelling, punctuation and grammar, as well as the clarity of expression.*
- The marks available for spelling, punctuation and grammar are clearly indicated.

Advice

- Read each question carefully before you start to answer it.
- Check your answers if you have time at the end.

Turn over ►

P44705RA

©2015 Pearson Education Ltd.

4/4/1/1/1/1



P 4 4 7 0 5 R A 0 1 2 0

PEARSON

SECTION A – THE PHYSICAL WORLD

Answer ALL questions in this section.

Some questions must be answered with a cross in a box ☒. If you change your mind about an answer, put a line through the box ☒ and then mark your new answer with a cross ☒.

Topic 1: Coastal Landscapes

1 (a) Study Figure 1a.

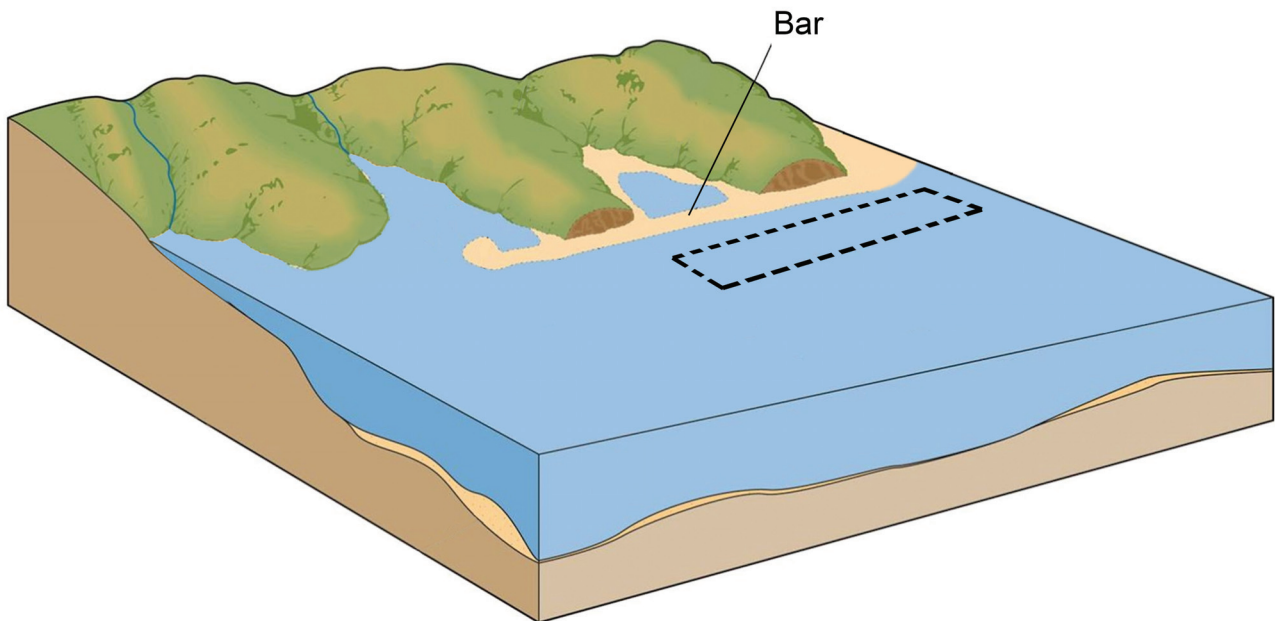


Figure 1a
Coastal landforms

(i) Draw an arrow in the box on Figure 1a to show the direction of longshore drift. (1)

(ii) Which **one** of the following is a depositional landform? (1)

- A** stack
- B** headland
- C** cliff
- D** spit



(iii) Which **one** of the following best describes when deposition occurs?

(1)

- A** Waves lose energy.
- B** Waves gain energy.
- C** Waves produce stronger backwash.
- D** Waves get bigger.

(b) Complete the following sentences which describe and explain the formation of a bar.

Use some of the words in the box below.

(4)

sediment	boulders	headland	cave	cliff
lagoon	deposited	spit	flood	weathered

Longshore drift transports along the coastline.

When there is a change in the direction of the coastline, this material

is

If the continues to grow across a bay it will

form a bar.

The bar may block the bay and form a behind it.



(c) Outline how fetch and weathering processes can affect cliff recession.

(4)

Fetch

.....

.....

.....

.....

Weathering processes

.....

.....

.....

.....

(d) Study Figure 1b (photograph) in the Resource Booklet.

Explain how geology influences the formation of different coastal landforms.

(4)

.....

.....

.....

.....

.....

.....

.....

.....

.....

.....

(Total for Question 1 = 15 marks)



Topic 2: River Landscapes

2 (a) Study Figure 2a.

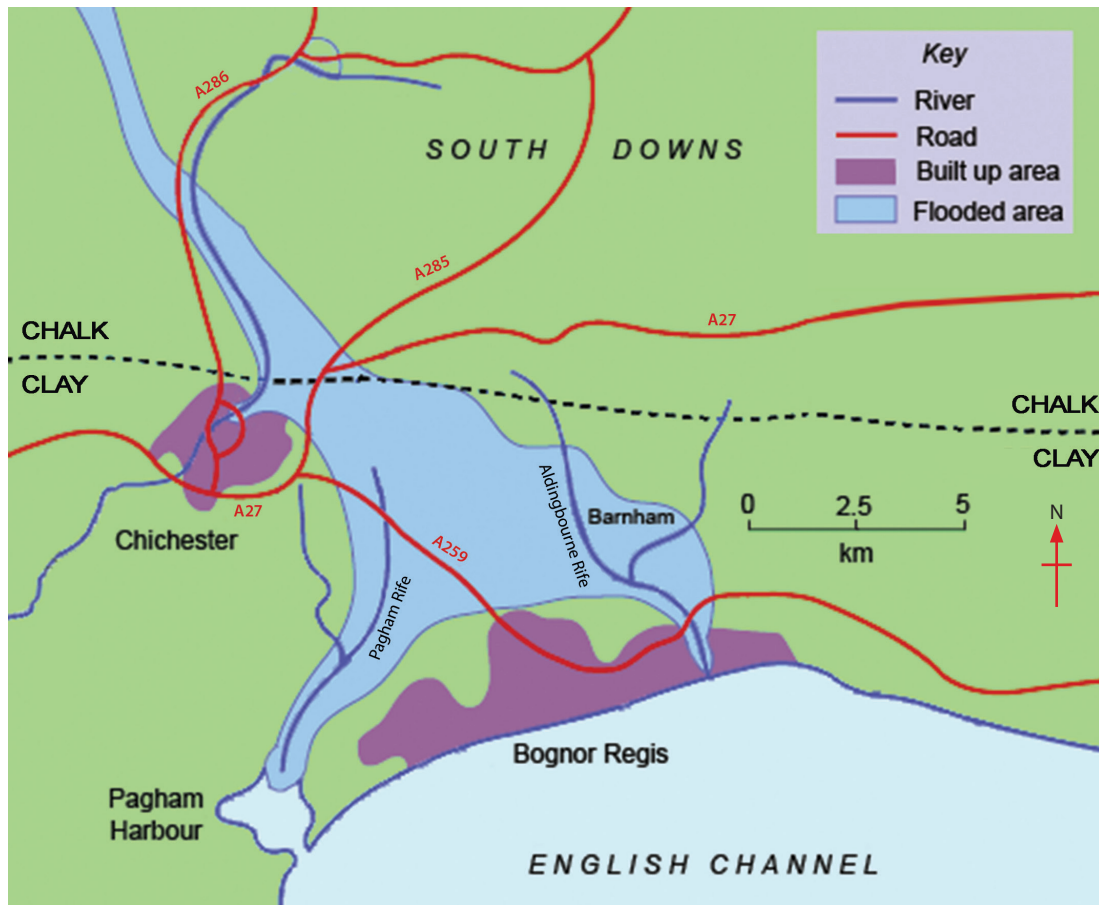


Figure 2a
A map showing areas affected by the flooding near Chichester

(i) Which road has the greatest distance in the flooded area?

(1)

- A A27
- B A259
- C A285
- D A380

(ii) Which **one** of the following best describes the approximate size of the flooded area in Figure 2a?

(1)

- A 4km²
- B 40km²
- C 400km²
- D 4000km²



(iii) Which **one** of the following is the best definition of river flooding?

(1)

- A** When discharge is less than the channel capacity.
- B** The amount of load in the river increases.
- C** The river freezes over in winter.
- D** When discharge is greater than the channel capacity.

(iv) Complete the following sentences that describe and explain how rock type affects flooding on the map shown in Figure 2a.

Use some of the words in the box below.

(4)

water	runoff	bigger	wider	weather
clay	chalk	ice	interception	smaller

The flooded area is on the chalk than on the clay.

Chalk allows to pass through it because it is permeable.

Chichester is more likely to flood as it is found on

Flooding happens when there is less infiltration and greater



(b) Study Figure 2b (photograph) in the Resource Booklet.

River courses are divided into three stages.
Which stage of the Virgin River is shown in Figure 2b?

Outline **two** reasons to support your choice.

(4)

Chosen stage

1

.....

.....

.....

2

.....

.....

.....

(c) Using examples, describe how the effects of flooding can be reduced through planning and education.

(4)

Planning

.....

.....

.....

.....

Education

.....

.....

.....

.....

(Total for Question 2 = 15 marks)



Topic 3: Tectonic Landscapes

3 (a) Study Figure 3a.

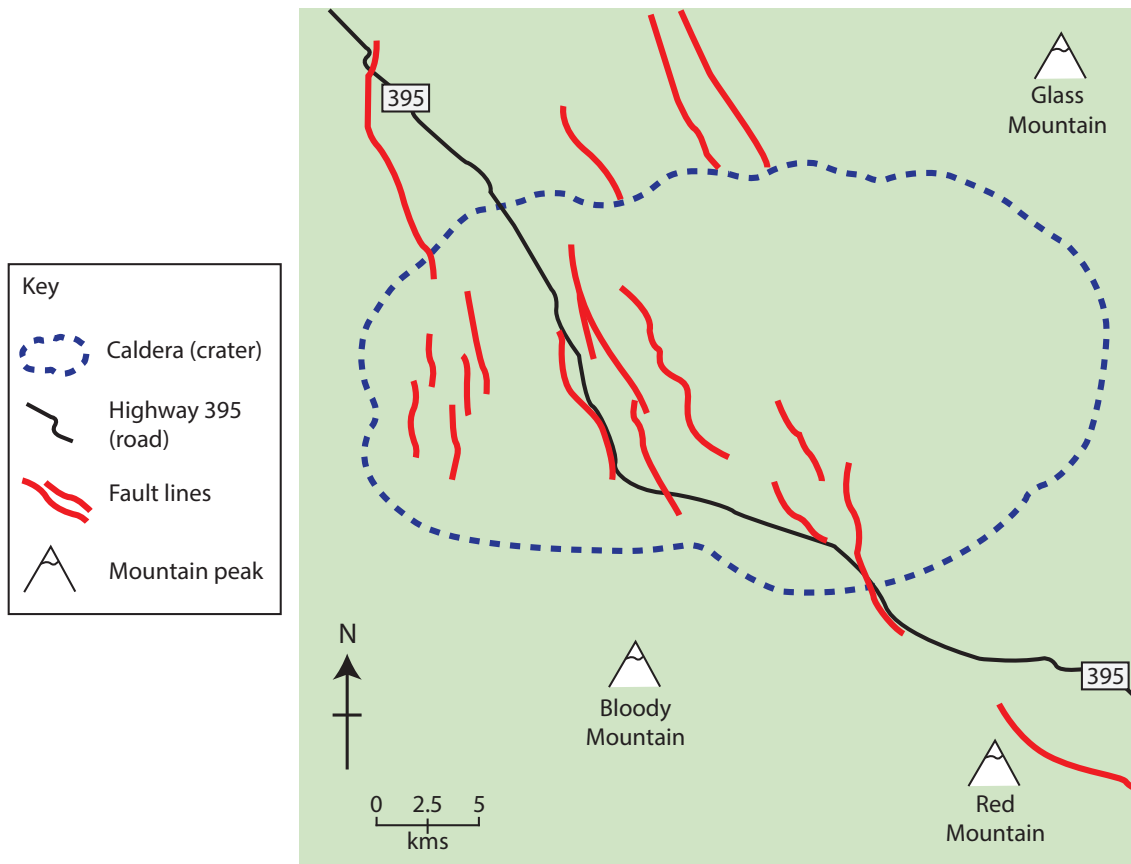


Figure 3a

A sketch map showing the distribution of fault lines in Long Valley, California

- (i) Which **one** of the following best describes the direction of most fault lines? (1)
- A** East to west.
 - B** North to south.
 - C** North east to south west.
 - D** North west to south east.
- (ii) Which **one** of the following best describes the distribution of the fault lines? (1)
- A** Most are found along Highway 395 (road).
 - B** The fault lines are evenly spread.
 - C** Most are found within the crater (caldera).
 - D** They are all around the Bloody Mountain.



(b) Which **one** of the following is the main reason why earthquakes occur?

(1)

- A** Movement on a fault line.
- B** Building of large reservoirs.
- C** Rapid rates of erosion.
- D** Large volcanic eruptions.

(c) Complete the following sentences that describe how the use of specialist instruments helps scientists study earthquakes.

Use some of the words in the box below.

(4)

energy	clinometer	frequency	prevent	seismometer
water	gas	understand	tiltmeter	impact

Earthquakes are measured using a

These instruments detect the released during an earthquake.

They help scientists the earthquake.

This information is used to reduce the of earthquakes.



(d) Outline **two** ways that planning and education can reduce the impact of earthquakes.

(4)

.....

.....

.....

.....

.....

.....

.....

.....

.....

.....

.....

.....

.....

.....

.....

.....

.....

.....

.....

.....

.....

.....

.....

(e) Study Figure 3b (photograph) in the Resource Booklet.

Describe how volcanoes are formed on convergent plate boundaries.

(4)

.....

.....

.....

.....

.....

.....

.....

.....

.....

.....

.....

.....

.....

.....

.....

.....

.....

.....

.....

.....

.....

.....

.....

(Total for Question 3 = 15 marks)

TOTAL FOR SECTION A = 45 MARKS



SECTION B – ENVIRONMENTAL ISSUES

Answer EITHER Question 4 or Question 5.

Topic 4: A Wasteful World

Spelling, punctuation and grammar will be assessed in 4*(f).

If you answer Question 4 put a cross in the box .

4 (a) (i) Which **one of the following best describes the term **recycle**?** (1)

- A** To repair items.
- B** To throw items away.
- C** To use items again.
- D** To use items only once.

(ii) Which **one of the following is a benefit of recycling?** (1)

- A** More raw materials are used.
- B** Less landfill space is needed.
- C** More waste is incinerated.
- D** More waste is produced.

(iii) Which **one of the following is an example of a **white good**?** (1)

- A** digital radio
- B** car
- C** mobile phone
- D** washing machine



(b) Study Figure 4a.

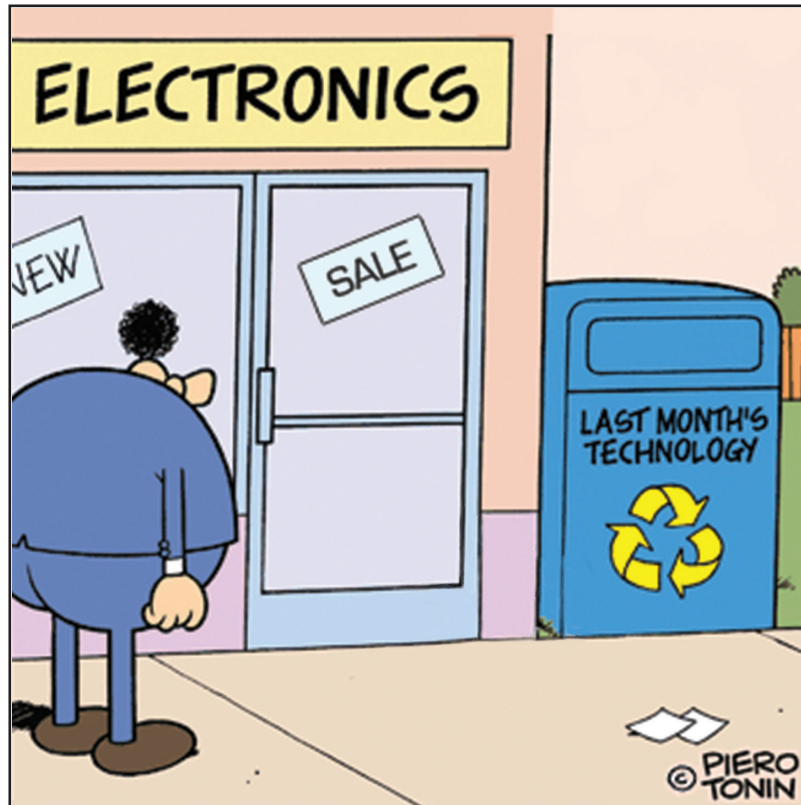


Figure 4a

A cartoon about waste

Describe the message shown in the cartoon in Figure 4a.

(3)

.....

.....

.....

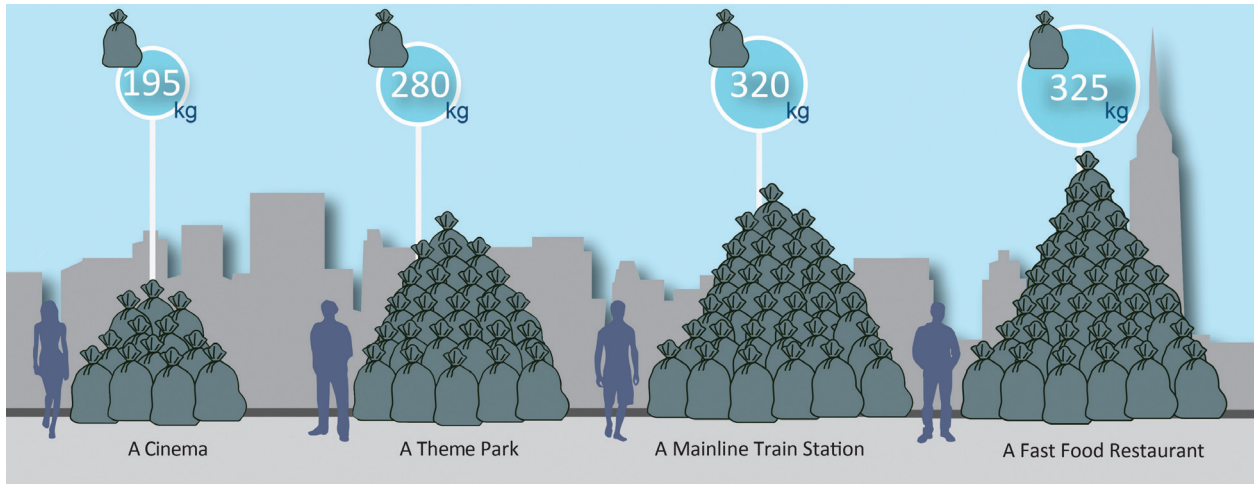
.....

.....

.....



(c) Study Figure 4b.



(Source: <http://catalystreview.net/wp-content/uploads/2010/04/Garbage-Contribution-580.png>)

Figure 4b
Average waste contributions from businesses in a 6 hour period

- (i) Which **one** of the following produces less than an average of 280kgs of waste? (1)
- A theme park
 - B mainline train station
 - C fast food restaurant
 - D cinema

- (ii) Suggest **one** reason for the high waste production in fast food restaurants. (1)

.....

.....

(d) Describe **one** method a High Income Country (HIC) uses to dispose of its waste.

(2)

.....

.....

.....

.....

(e) Describe how energy is wasted by households.

(4)

.....

.....

.....

.....

.....

.....

.....

.....



*(f) Explain how the development of **one** renewable energy source has an impact on the environment.

(6)

Chosen renewable energy source

.....

.....

.....

.....

.....

.....

.....

.....

.....

.....

.....

.....

.....

.....

.....

.....

.....

.....

.....

.....

.....

.....

.....

(Total for spelling, punctuation and grammar = 4 marks)
(Total for Question 4 = 24 marks)



Topic 5: A Watery World

Spelling, punctuation and grammar will be assessed in 5*(e).

If you answer Question 5 put a cross in the box .

- 5 (a) (i) What is groundwater? (1)
- A Rainfall collected on the surface in lakes.
 - B Water found underground in soil and rock.
 - C Rainfall collected in reservoirs.
 - D Water in a river channel.
- (ii) Which **one** of the following is a benefit of reservoirs? (1)
- A They never run out of water.
 - B The water supply can be easily managed.
 - C The removal of water leads to unstable land.
 - D They require energy to pump the water.
- (iii) Which **one** of the following is an example of using water for leisure? (1)
- A watering crops
 - B treating sewage
 - C watering golf courses
 - D car manufacture



(b) Study Figure 5a (photograph).



(Source: © Michael Aw / Getty Images)

Figure 5a
Water Supply at Boulder City, Arizona

Describe the water supply method shown in Figure 5a.

(3)

.....

.....

.....

.....

.....

.....

.....



(c) Study Figure 5b.

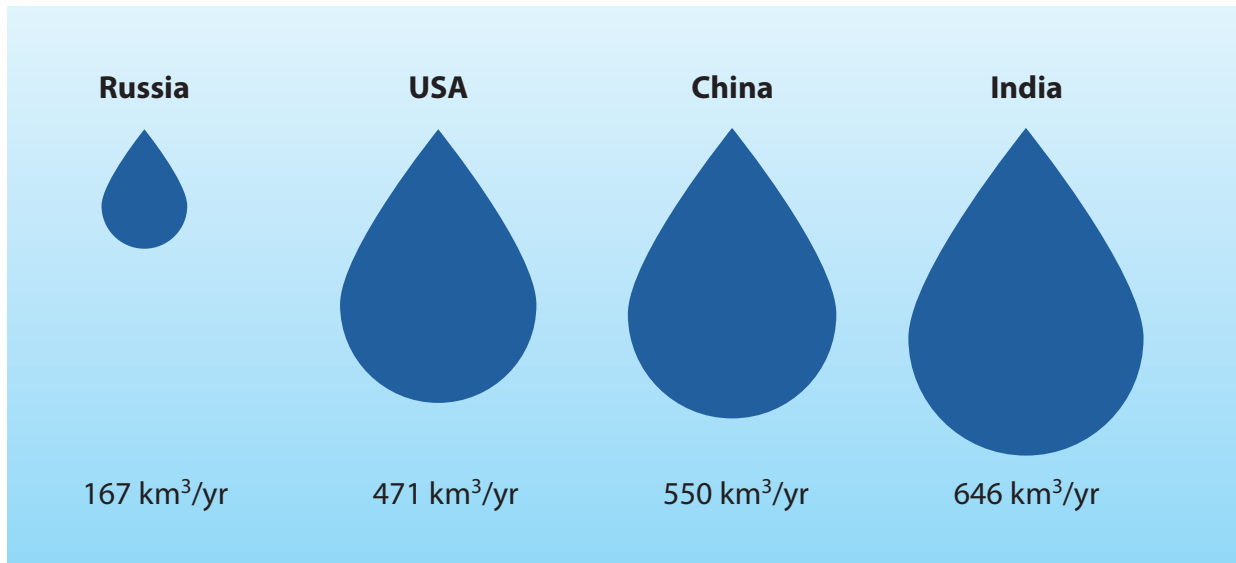


Figure 5b
Total annual fresh water use for selected countries

(i) Which country uses more than 600km³ of fresh water per year?

(1)

- A** China
- B** India
- C** Russia
- D** USA

(ii) Suggest **one** reason for high fresh water use in High Income Countries (HICs) such as the USA.

(1)

(iii) Describe **one** problem of water supply in HICs.

(2)



(d) Outline how water is managed in households.

(4)

.....

.....

.....

.....

.....

.....

.....

.....



Pearson Edexcel GCSE

Geography A

Unit 2: The Natural Environment

Wednesday 3 June 2015 – Afternoon

Resource Booklet

Paper Reference

5GA2F/01

5GA2H/01

Do not return the Resource Booklet with the question paper.

Instructions

This Resource Booklet contains resources needed for use with the Unit 2: The Natural Environment examination. This Resource Booklet is for use with both Foundation and Higher tier papers.

Turn over ►

P44705A

©2015 Pearson Education Ltd.

4/4/11/1/1



PEARSON



Figure 1b
The Oregon coastline



Figure 2b
The Virgin River in Zion National Park



Figure 3b
**Mount St. Helens is a volcano that was formed
on a convergent plate boundary**

BLANK PAGE