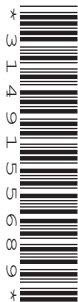


Tuesday 13 May 2014 – Afternoon

GCSE GEOGRAPHY A

A731/02 Contemporary Themes in Geography (Higher Tier)



Candidates answer on the Question Paper.

OCR supplied materials:

- An Insert (A731/01/02/1 – inserted)

Other materials required:

None

Duration: 1 hour 45 minutes



Candidate forename		Candidate surname	
-----------------------	--	----------------------	--

Centre number						Candidate number				
---------------	--	--	--	--	--	------------------	--	--	--	--

INSTRUCTIONS TO CANDIDATES

- The Insert will be found inside this document.
- Write your name, centre number and candidate number in the boxes above. Please write clearly and in capital letters.
- Use black ink. HB pencil may be used for graphs and diagrams only.
- Answer **all** the questions.
- Read each question carefully. Make sure you know what you have to do before starting your answer.
- Write your answer to each question in the space provided. If additional space is required, you should use the lined pages at the end of this booklet. The question number(s) must be clearly shown.
- Do **not** write in the bar codes.

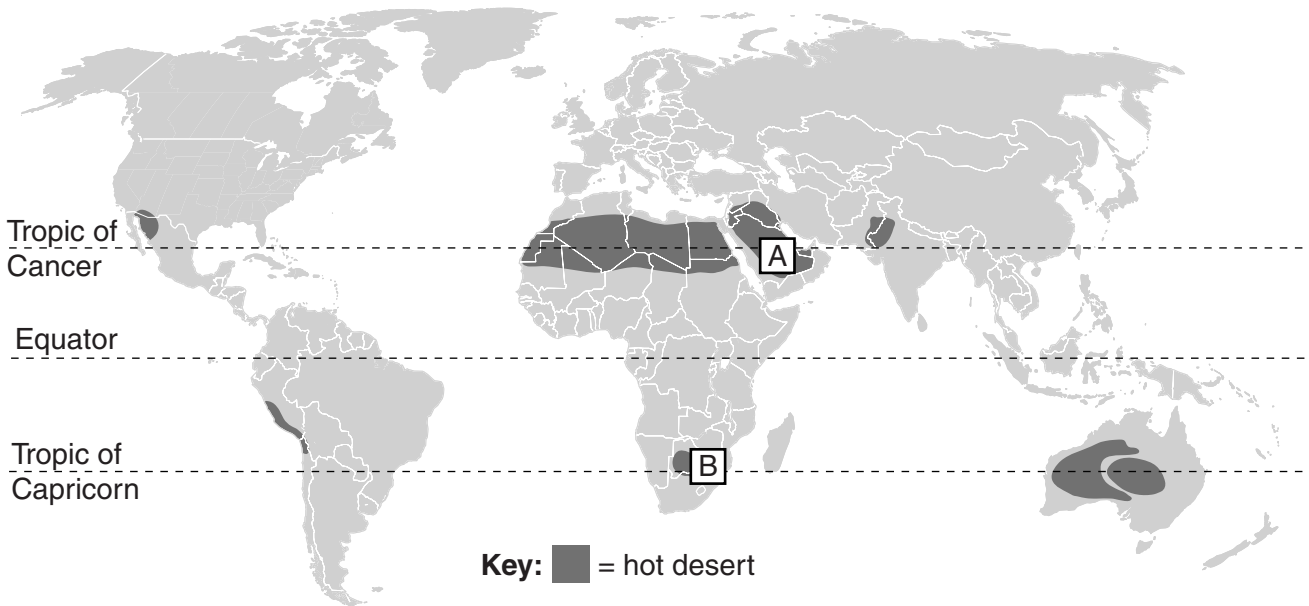
INFORMATION FOR CANDIDATES

- The number of marks is given in brackets [] at the end of each question or part question.
- The total number of marks for this paper is **112**.
- You will be awarded marks in questions 1(d)(ii), 2(d), 3(d), 4(b), 4(c), 5(c) and 6(b)(ii) for the quality of written communication of your answer. Questions marked with a pencil (✎) will carry 3 additional marks for spelling, punctuation and grammar.
- This document consists of **20** pages. Any blank pages are indicated.

Answer **all** the questions.

Extreme Environments

1 (a) Study the map below which shows hot deserts of the world.



(i) Name the hot desert areas labelled A and B.

A

B

[2]

(ii) Which **one** of the following statements best describes the location of hot desert areas?

Tick (✓) the correct answer.

Within 5 degrees north and south of the Equator

On and around the Tropics of Cancer and Capricorn

Mainly in the southern hemisphere

[1]

(b) Suggest **one** reason why hot deserts are dry. Explain your answer.

.....
.....
.....
..... [2]

(c) Use statistics to describe the climate of **one** area of hot desert you have studied.

Name of hot desert

.....
.....
.....
.....
.....
.....
..... [3]

(d) Study Fig. 1a in the separate Insert.

(i) Explain the physical processes which have led to the formation of this landscape.

.....
.....
.....
.....
.....
.....
.....
..... [4]

(b) Explain the physical processes that lead to the formation of fold mountains. You may use a diagram to help you.

.....

.....

.....

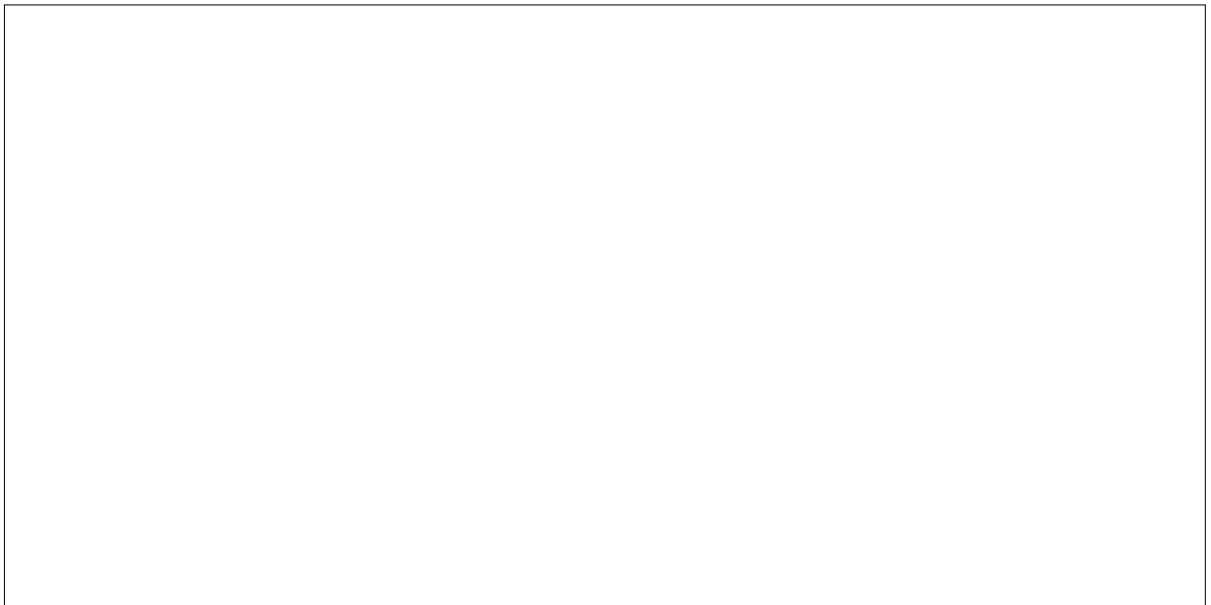
.....

.....

.....

.....

.....



[4]

(c) Study Fig. 3 in the separate Insert.

How does this portray mountain environments?
Use evidence from the extract to explain your answer.

.....

.....

.....

.....

[2]

The Global Citizen

Study Fig. 4 in the separate Insert, which is about McDonald's, a multinational company.

3 (a) Define the term 'multinational company'.

.....
..... [1]

(b) Describe the global distribution of McDonald's restaurants shown in Fig. 4.

.....
.....
.....
..... [2]

(c) You will have studied one named product.

State the product you have studied

Describe and explain the global pattern of its production.

.....
.....
.....
.....
.....
.....
.....
.....
..... [4]

(e) Define the term 'ethical consumerism' and explain how being an ethical consumer might affect the choice of food products you buy.

.....
.....
.....
.....
.....
.....
.....
..... [4]

4 (a) Study Figs 5a and 5b in the separate Insert.

(i) Using data from Fig. 5a, describe how energy use in China has changed over time.

.....
.....
.....
..... [2]

(ii) What message about energy use might the cartoon in Fig. 5b communicate?

.....
.....
.....
..... [2]

Similarities and Differences in Settlements and Population

5 (a) Complete the passage by placing the correct words from the box into the spaces below.

urban	increases	decreases
	rural	primary

Settlements can be put in order of importance using a range of factors that include size, population and services. Hamlets and villages are settlements with a small number of services. Larger settlements such as towns and cities have bigger populations that require more services. As settlements grow in population size, the total number of each type of settlement [2]

(b) Study Fig. 6 in the separate Insert.

(i) Define the term 'mega city'.

.....
..... [1]

(ii) Using Fig. 6, describe how the distribution of mega cities changed between 1980 and 2010.

.....
.....
.....
..... [2]

(iii) Explain **two** reasons why the size of mega cities increased between 1980 and 2010.

Reason 1
.....
.....

Reason 2
.....
.....

6 (a) Study Fig. 7 in the separate Insert, which shows two population pyramids for China.

(i) Identify **two** ways in which China's population structure is forecast to change between 2014 and 2050.

.....
.....
.....
..... [2]

(ii) Explain **two** possible reasons for the changes you have identified in 6(a)(i) above.

.....
.....
.....
.....
.....
.....
.....
.....
..... [4]

(b) (i) For an issue related to population change that you have studied, describe **two** ways in which the issue has had an impact on people's quality of life. Give reasons for your answers.

Issue chosen

Way 1

.....
.....
.....

Way 2

.....
.....
.....

[4]

ADDITIONAL ANSWER SPACE

If additional answer space is required, you should use the following lined page(s). The question number(s) must be clearly shown in the margins.

A large area of lined paper for writing answers. It features a vertical margin line on the left side and horizontal dotted lines for writing. The lines are evenly spaced and extend across the width of the page.

A large area of the page is reserved for writing, featuring a vertical solid line on the left side and horizontal dotted lines extending across the page.



Copyright Information

OCR is committed to seeking permission to reproduce all third-party content that it uses in its assessment materials. OCR has attempted to identify and contact all copyright holders whose work is used in this paper. To avoid the issue of disclosure of answer-related information to candidates, all copyright acknowledgements are reproduced in the OCR Copyright Acknowledgements Booklet. This is produced for each series of examinations and is freely available to download from our public website (www.ocr.org.uk) after the live examination series.

If OCR has unwittingly failed to correctly acknowledge or clear any third-party content in this assessment material, OCR will be happy to correct its mistake at the earliest possible opportunity.

For queries or further information please contact the Copyright Team, First Floor, 9 Hills Road, Cambridge CB2 1GE.

OCR is part of the Cambridge Assessment Group; Cambridge Assessment is the brand name of University of Cambridge Local Examinations Syndicate (UCLES), which is itself a department of the University of Cambridge.